

COMMUNICABLE DISEASES SURVEILLANCE

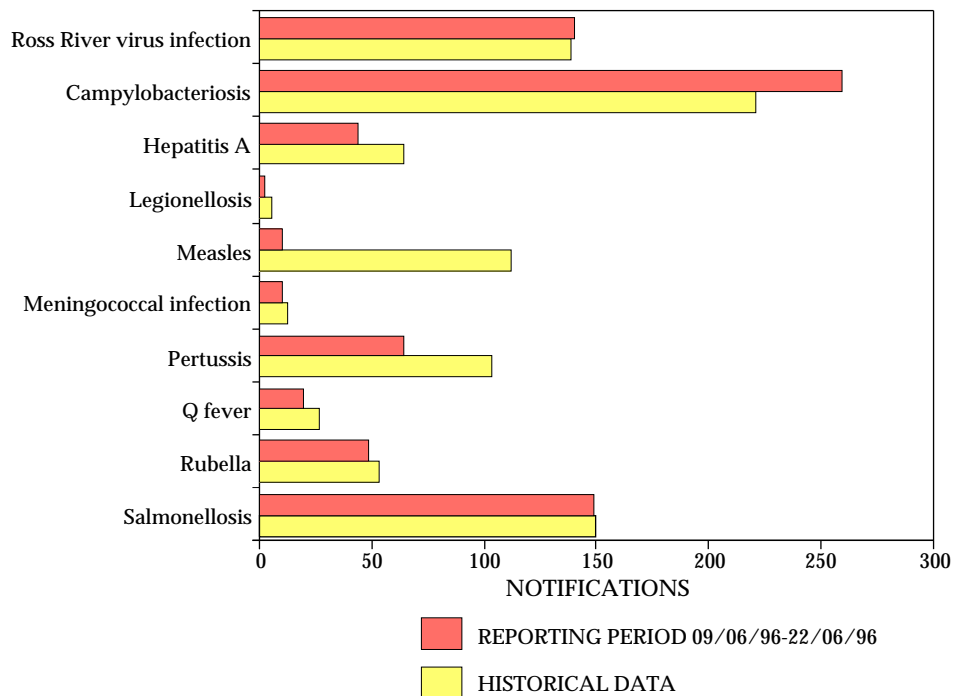
National Notifiable Diseases Surveillance System

The NNDSS is conducted under the auspices of the Communicable Diseases Network Australia-New Zealand. The system coordinates the national surveillance of 41 communicable diseases or disease groups endorsed by the National Health and Medical Research Council (NHMRC). Notifications of these diseases are made to State and Territory health authorities under the provisions of their respective public health legislation. De-identified core unit data are supplied fortnightly for collation, analysis and dissemination. For further information, see *CDI 1996;20:9-10*.

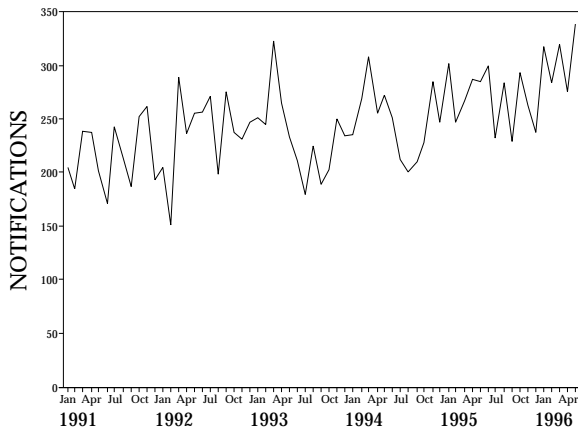
Reporting period 9 to 22 June 1996

There were 1,546 notifications received for this two-week period (Tables 1, 2 and 3). No reports were received from Victoria for the current period. Reports for selected diseases have been compared with averaged data for this time of year in the previous three years (Figure 1).

Figure 1. Selected National Notifiable Diseases Surveillance System reports, and historical data¹

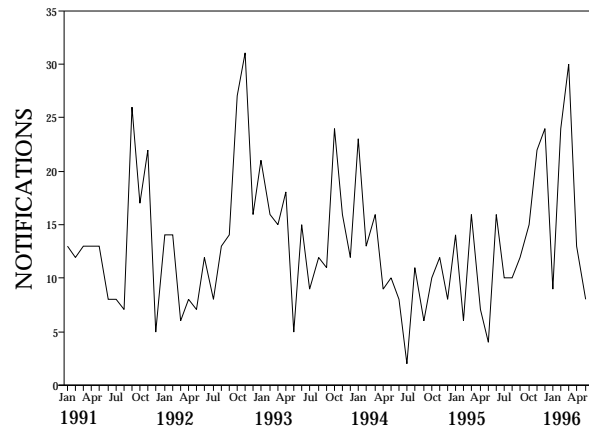


1. The historical data are the averages of the number of notifications in 9 previous 2-week reporting periods: the corresponding periods of the last 3 years and the periods immediately preceding and following those.
2. No data from Victoria are included in this figure.

Figure 2. Gonococcal infection notifications 1991 to 1996, by month of onset

The number of notifications of **Ross River virus infection** has continued to decline. Some activity is continuing in the coastal regions of Queensland and northern New South Wales.

There were 113 notifications of **gonococcal infection** received for the current period. Notifications have shown an upward trend in recent years (Figure 2). The total of 3167 cases notified in 1995 was the highest since 1988. However, notifications remain significantly lower than the numbers of cases reported throughout the 1970s and early 1980s. The recent increases in notifications have been confined to the Northern Territory, Queensland and Western Australia. It is not clear whether the increases in notifications are due to increased incidence or more complete case detection. Some evidence for better case detection is shown by a consistently declining male:female ratio, from 2.66:1 in 1992 and 1993 to 2.25:1 in 1995 and 2.12:1 this year. The age spectrum of cases has not altered significantly. Each year between 75 and 80% of cases in females were in

Figure 3. Leptospirosis notifications 1991 to 1996, by month of onset

the age range 15 to 29 years; similar percentages of male cases were aged in the range 15-34 years.

Twelve cases of **leptospirosis** were received for the current period, all from Queensland. All cases but one were males. Most cases were aged in the range 20-39 years. Notifications received over the last 5 years have shown a definite seasonal pattern (Figure 3), with increased numbers of cases from September to April and lower numbers in the winter months. Each year between 90% and 95% of cases were in males; more than half of all cases reported were in males 20-39 years. Of 882 cases reported since January 1991, 35% have been notified from Queensland and 43% from Victoria.

A further ten notifications of **meningococcal infection** were received during the current period. Three cases were in children under ten years, and the remainder in adults ranging in age from 18 to 80 years. The reports were received from six Statistical Divisions in four States.

Table 1. Notifications of diseases preventable by vaccines recommended by the NHMRC for routine childhood immunisation, received by State and Territory health authorities in the period 9 to 22 June 1996

DISEASE	ACT	NSW	NT	Qld	SA	Tas	WA	TOTALS FOR AUSTRALIA ¹			
								This period	This period	Year to date	Year to date
								1996	1995	1996	1995
Diphtheria	0	0	0	0	0	0	0	0	0	0	0
<i>Haemophilus influenzae</i> B infection	1	0	0	0	2	0	0	3	6	31	43
Measles	0	3	0	2	0	0	5	10	36	220	840
Mumps	0	1	0	NN	0	0	1	2	8	52	69
Pertussis	0	17	0	24	22	0	1	64	152	1392	2093
Poliomyelitis	0	0	0	0	0	0	0	0	0	0	0
Rubella	0	7	0	35	3	3	1	49	73	1262	1181
Tetanus	0	0	0	0	0	0	0	0	0	1	2

1. Totals comprise data from all States and Territories. Cumulative figures are subject to retrospective revision, so there may be discrepancies between the number of new notifications and the increment in the cumulative figure from the previous period.

NN Not Notifiable.

Table 2. Notifications of other diseases¹ received by State and Territory health authorities in the period 9 to 22 June 1996

DISEASE	ACT	NSW	NT	Qld	SA	Tas	WA	TOTALS FOR AUSTRALIA ²			
								This period	This period	Year to date	Year to date
								1996	1995	1996	1995
Arbovirus Infection (NEC) ^{3,4}	0	0	2	0	0	0	0	2	25	108	348
Barmah Forest virus infection	0	10	-	20	0	0	-	30	43	552	271
Ross River virus infection	0	27	4	100	1	-	8	140	207	6977	2030
Dengue	0	0	0	0	0	-	0	0	1	22	14
Campylobacteriosis ⁵	2	-	8	110	81	15	43	259	396	5091	4977
Chlamydial infection (NEC) ⁶	4	NN	24	132	0	9	48	217	284	3323	3123
Donovanosis	0	NN	0	0	NN	0	1	1	7	26	46
Gonococcal infection ⁷	0	13	24	51	0	0	25	113	135	1763	1482
Hepatitis A	0	24	3	15	2	0	0	44	53	1135	833
Hepatitis B incident	0	3	0	2	0	0	0	5	14	98	174
Hepatitis B unspecified	6	0	0	33	0	1	10	50	69	709	853
Hepatitis C incident	0	0	0	-	0	-	-	0	6	14	48
Hepatitis C unspecified	9	NN	17	160	NN	12	29	227	288	3693	3941
Hepatitis (NEC)	0	0	0	0	0	0	NN	0	0	10	14
Legionellosis	0	1	0	0	1	0	0	2	9	82	109
Leptospirosis	0	0	0	12	0	0	0	12	2	119	57
Listeriosis	2	0	0	0	0	0	0	2	2	26	38
Malaria	0	9	1	16	0	0	5	31	50	374	341
Meningococcal infection	0	4	0	3	2	1	0	10	17	122	163
Ornithosis	0	NN	0	0	0	0	0	0	4	39	68
Q fever	0	12	0	7	0	0	0	19	20	230	211
Salmonellosis (NEC)	5	17	8	86	10	2	21	149	237	3195	3723
Shigellosis ⁵	0	-	5	13	7	0	2	27	32	324	424
Syphilis	0	14	9	9	0	0	9	41	83	694	967
Tuberculosis	1	12	0	5	0	1	1	20	47	481	542
Typhoid ⁸	0	1	0	0	0	0	0	1	2	44	38
Yersiniosis (NEC) ⁵	0	-	0	9	4	0	0	13	19	128	193

- For HIV and AIDS, see *CDI* 1996;20:289. For rarely notified diseases, see Table 3.
 - Totals comprise data from all States and Territories. Cumulative figures are subject to retrospective revision so there may be discrepancies between the number of new notifications and the increment in the cumulative figure from the previous period.
 - Tas: includes Ross River virus and dengue.
 - WA, NT and Vic: includes Barmah Forest virus.
 - NSW: only as 'foodborne disease' or 'gastroenteritis in an institution'.
 - WA: genital only.
 - NT, Qld, SA and Vic: includes gonococcal neonatal ophthalmia.
 - NSW, Vic: includes paratyphoid.
- NN Not Notifiable.
NEC Not Elsewhere Classified.
- Elsewhere Classified.

Table 3. Notifications of rare¹ diseases received by State and Territory health authorities in the period 9 to 22 June 1996

DISEASES	Total this period	Reporting States or Territories	Year to date 1996
Botulism	0		0
Brucellosis	1	Qld	14
Chancroid	0		1
Cholera	1	Qld	4
Hydatid infection	1	Qld	20
Leprosy	0		7
Lymphogranuloma venereum	0		0
Plague	0		0
Rabies	0		0
Yellow fever	0		0
Other viral haemorrhagic fevers	0		0

- Fewer than 60 cases of each of these diseases were notified each year during the period 1988 to 1995.

National Influenza Surveillance

Australian Sentinel Practice Research Network; Communicable Diseases Intelligence Virology and Serology Reporting Scheme Contributing Laboratories, New South Wales Department of Health; Victorian Department of Health; World Health Organisation Collaborating Centre for Influenza Reference and Research.

National Influenza Surveillance is conducted from May to September each year. Data are combined from a number of sources to provide an indication of influenza activity. Included are sentinel general practitioner surveillance, absenteeism data from a national employer, and laboratory data from LabVISE and the World Health Organization Collaborating Centre for Influenza Reference and Research. For further information, see *CDI 1996;20:9-12*.

The consultation rate for influenza-like illness recorded by ASPREN has continued to rise this fortnight. Consultations increased in early June in New South Wales and in mid-June in the Northern Territory (Figure 4). The absenteeism rate for Australia Post has risen slightly (Figure 5).

The number of laboratory reports of influenza A has increased but remains low compared with previous years. Seventeen reports were received this fortnight (Figure 6). One report was diagnosed by single high titre, the remainder by antigen detection (13) and virus isolation (3). Seventy-two reports of influenza A have been received so far this year. Of these 24% were for children under five years of age and 11% were for adults over 65 years of age.

One report of influenza B was received this fortnight, diagnosed by a fourfold rise in titre. Only eight reports have been received so far this year (Figure 7).

Figure 4. Sentinel general practitioner influenza consultation rates per 1,000 encounters, 1996, by week

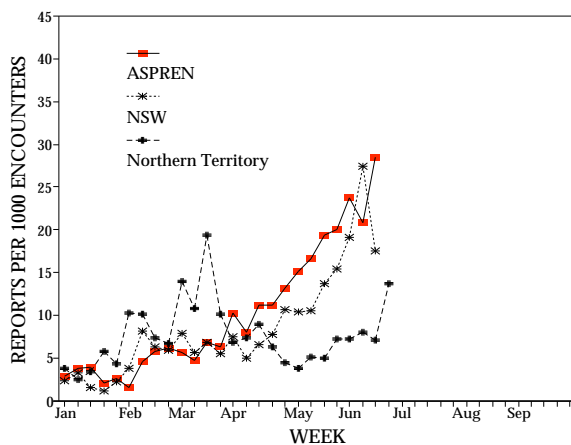


Figure 5. Australia Post absenteeism, 1996, by week

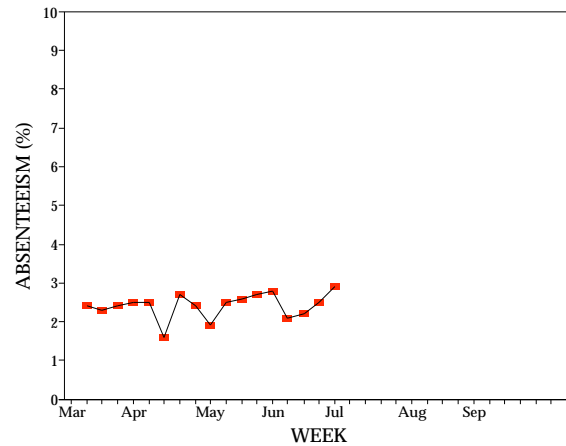


Figure 6. Influenza A laboratory reports, 1996, by method of diagnosis and week of specimen collection

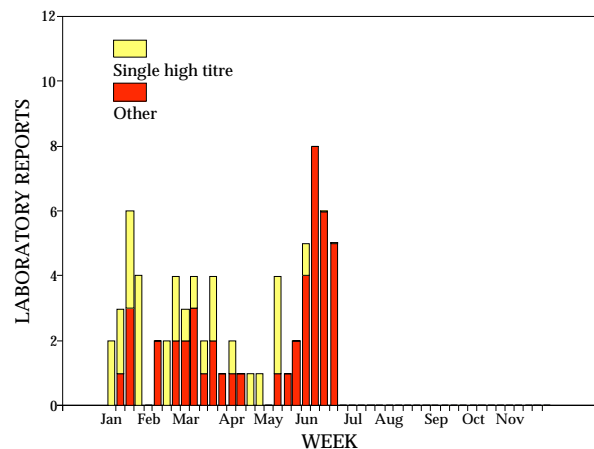
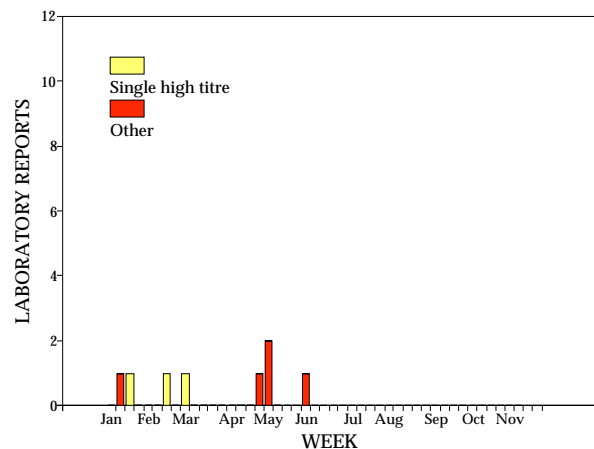


Figure 7. Influenza B laboratory reports, 1996, by method of diagnosis and week of specimen collection



Australian Sentinel Practice Research Network

The Australian Sentinel Practice Research Network (ASPREN) comprises 99 sentinel general practitioners from throughout the country. A total of approximately 9,000 consultations are recorded each week for 12 conditions. Of these, CDI reports the consultation rate for influenza, rubella, measles, pertussis and gastroenteritis. For further information including case definitions see CDI 1996;20:98-99.

Reports for weeks 24 and 25 ending 16 and 23 June respectively are included in Table 4. The 9 cases of pertussis is the highest weekly total since a similar number was reported in week 10 (ending 10 March). The rates of reporting of rubella, measles, chickenpox and gastroenteritis continue at low levels.

Table 4. Australian Sentinel Practice Research Network reports, weeks 24 and 25, 1996

Condition	Week 24, to 16 June 1996		Week 25, to 23 June 1996	
	Reports	Rate per 1000 encounters	Reports	Rate per 1000 encounters
Influenza	161	20.9	243	28.5
Rubella	0	0	2	0.2
Measles	0	0	1	0.1
Chickenpox	12	1.6	11	1.3
Pertussis	0	0	9	1.1
Gastroenteritis	77	10.0	93	10.9

LabWISE

The Virology and Serology Reporting Scheme, LabWISE, is a sentinel reporting scheme. Twenty-one laboratories contribute data on the laboratory identification of viruses and other organisms. Data are collated and published in Communicable Diseases Intelligence each fortnight. These data should be interpreted with caution as the number and type of reports received is subject to a number of biases. For further information, see CDI 1996;20:9-12.

There were 1,235 reports received by the CDI Virology and Serology Reporting Scheme this period (Tables 5 and 6).

Reports of **respiratory syncytial virus** have increased as expected for this time of year. In previous years, the greatest number of reports occurred over the June to August period. A total of 168 reports was received in the last fortnight. Diagnosis was by antigen detection

(132), virus isolation (35) and single high titre (1). One hundred and sixty-three reports (97%) were for children under five years of age and 112 of these (69%) were under one year of age. Forty-seven per cent of reports were from New South Wales.

Rotavirus reports are expected to increase as reports usually peak in August (Figure 8). Fifty reports were received this period, 47 (94%) were for children under five years of age and 14 of these (30%) were under one year of age.

Reports of *Mycoplasma pneumoniae* have remained moderate throughout the last 18 months compared with 1992-93 (Figure 9). Forty-two reports were received in the last fortnight. Diagnosis was by IgM detection (30), single high titre (7), total antibody (3) and fourfold rise in titre (2).

Figure 8. Rotavirus laboratory reports, 1994 to 1996, by month of specimen collection

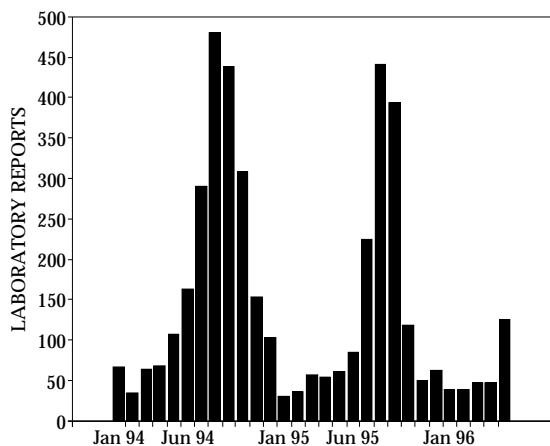


Figure 9. Mycoplasma pneumoniae laboratory reports, 1992 to 1996, by month of specimen collection

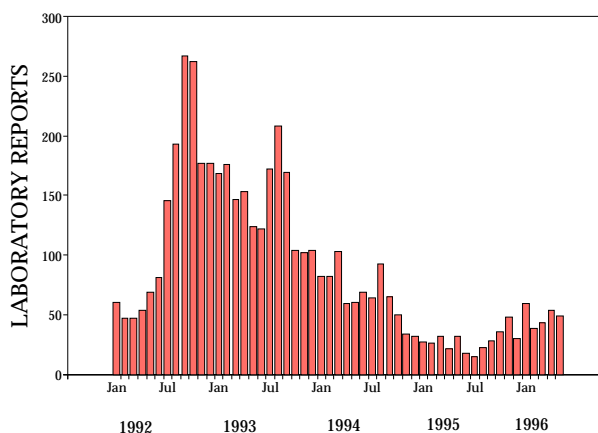


Table 5. Virology and serology laboratory reports by State or Territory¹ for the reporting period 13 to 26 June 1996, historical data², and total reports for the year

	State or Territory ¹								Total this fortnight	Historical data ²	Total reported this year
	ACT	NSW	NT	Qld	SA	Tas	Vic	WA			
MEASLES, MUMPS, RUBELLA											
Mumps virus			1	2				2	5	3.0	25
Rubella virus		2		18				1	23	8.3	290
HEPATITIS VIRUSES											
Hepatitis A virus		1	4	9				3	17	14.7	265
ARBOVIRUSES											
Ross River virus		6	6	132				16	160	31.3	2,951
Barmah Forest virus		1	1	12				1	15	7.5	144
Flavivirus (unspecified)		1							1	.8	22
ADENOVIRUSES											
Adenovirus type 3							1		1	3.0	57
Adenovirus type 35							1		1	.0	1
Adenovirus type 40								1	1	.0	17
Adenovirus not typed/pending		4		4			10	12	30	36.2	734
HERPES VIRUSES											
Cytomegalovirus	1	11	5	31		1	10	19	78	57.7	903
Varicella-zoster virus		5		25			11	14	55	36.8	659
Epstein-Barr virus		20	3	91			5	42	161	46.7	1,097
OTHER DNA VIRUSES											
Contagious pustular dermatitis (Orf virus)								1	1	.0	2
Parvovirus		1		3			2	3	9	4.3	76
PICORNA VIRUS FAMILY											
Echovirus type 14		1							1	.5	25
Echovirus type 30							1		1	4.7	2
Poliovirus type 1 (uncharacterised)							1		1	.8	9
Poliovirus type 2 (uncharacterised)		1					2		3	1.0	9
Rhinovirus (all types)		1		3			1	3	8	29.5	354
Enterovirus not typed/pending		1		2			5	20	28	43.3	471
ORTHO/PARAMYXOVIRUSES											
Influenza A virus		1		1			11	4	17	55.2	111
Influenza B virus							1		1	7.5	28
Parainfluenza virus type 1		5		3			6		14	28.3	184
Parainfluenza virus type 3		4		1			2		7	19.0	296
Respiratory syncytial virus		78	1	14		3	44	28	168	320.2	1,211
Paramyxovirus (unspecified)							5		5	.2	10
OTHER RNA VIRUSES											
HTLV-1			1						1	.0	3
Rotavirus		3	3				22	22	50	56.5	548
Norwalk agent							1		1	.3	29
Small virus (like) particle							3		3	1.0	10

Table 5. Virology and serology laboratory reports by State or Territory¹ for the reporting period 13 to 26 June 1996, historical data², and total reports for the year, continued

	State or Territory ¹								Total this fortnight	Historical data ²	Total reported this year
	ACT	NSW	NT	Qld	SA	Tas	Vic	WA			
OTHER											
<i>Chlamydia trachomatis</i> not typed		13	50	105		2	7	85	262	84.5	2,027
<i>Chlamydia psittaci</i>							1	1	2	2.8	64
<i>Chlamydia</i> spp typing pending				1					1	.3	1
<i>Mycoplasma pneumoniae</i>		7		23			6	6	42	18.8	310
<i>Coxiella burnetii</i> (Q fever)		5		4			4	3	16	6.7	94
<i>Rickettsia</i> spp - other								2	2	.3	4
<i>Bordetella pertussis</i>							9	5	14	27.2	272
<i>Bordetella</i> species		1		11					12	2.5	149
<i>Legionella longbeachae</i>								1	1	1.3	11
<i>Leptospira</i> species		1		3					4	.3	29
<i>Schistosoma</i> species							3	9	12	4.5	176
TOTAL	1	174	75	498		6	176	305	1,235	967.7	13,680

1. State or Territory of postcode, if reported, otherwise State or Territory of reporting laboratory.
2. The historical data are the averages of the numbers of reports in 6 previous 2 week reporting periods: the corresponding periods of the last 2 years and the periods immediately preceding and following those.

Table 6. Virology and serology laboratory reports by contributing laboratories for the reporting period 13 to 26 June 1996

STATE OR TERRITORY	LABORATORY	REPORTS
New South Wales	Institute of Clinical Pathology & Medical Research, Westmead	85
	Royal North Shore Hospital, St Leonards	46
	Royal Prince Alfred Hospital, Camperdown	14
Northern Territory	Alice Springs Hospital	4
Queensland	Queensland Medical Laboratory, West End	542
Tasmania	Northern Tasmanian Pathology Service, Launceston	3
	Royal Hobart Hospital, Hobart	3
Victoria	Microbiological Diagnostic Unit, University of Melbourne	6
	Royal Children's Hospital, Melbourne	109
	Unipath Laboratories	8
	Victorian Infectious Diseases Reference Laboratory, Fairfield Hospital	62
Western Australia	PathCentre Virology, Perth	162
	Princess Margaret Hospital, Perth	50
	Royal Perth Hospital	10
	Western Diagnostic Pathology	131
TOTAL		1235