

Communicable Diseases Surveillance

Presentation of NNDSS data

In the March 2000 issue an additional summary table was introduced. Table 1 presents 'date of notification' data, which is a composite of three components: (i) the true onset date from a clinician, if available, (ii) the date the laboratory test was ordered, or (iii) the date reported to the public health unit. Table 2 presents data by report date for information only. In Table 2 the report date is the date the public health unit received the report.

Table 1 now includes the following summary columns: total current month 2000 data; the totals for previous month 2000 and corresponding month 1999; a 5 year mean which is calculated using previous, corresponding and following month data for the previous 5 years (MMWR Weekly Feb 25, 2000:49(07);139-146); year to date (YTD) figures; the mean for the year to date figures for the previous 5 years; and the ratio of the current month to the mean of the last 5 years.

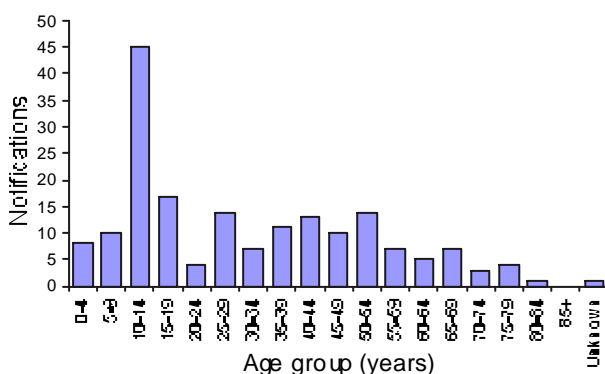
Highlights

Communicable Diseases Surveillance consists of data from various sources. The National Notifiable Diseases Surveillance System (NNDSS) is conducted under the auspices of the Communicable Diseases Network Australia New Zealand. The *CDI* Virology and Serology Laboratory Reporting Scheme (LabVISE) is a sentinel surveillance scheme. The Australian Sentinel Practice Research Network (ASPREN) is a general practitioner-based sentinel surveillance scheme. In this report, data from the NNDSS are referred to as 'notifications' or 'cases', whereas those from ASPREN are referred to as 'consultations' or 'encounters' while data from the LabVISE scheme are referred to as 'laboratory reports'.

Vaccine Preventable Diseases (VPD)

Overall, 219 notifications of VPDs with an onset date in May 2000 were received. Pertussis continued to be the most frequently notified VPD (Figure 1). There were no notifications of *Haemophilus influenzae* type b, diphtheria, tetanus or poliomyelitis.

Figure 1. Notifications of pertussis, Australia, May 2000, by age group and sex



There were five cases of measles in this period compared to 17 in April 2000. Four cases were from Queensland and the other case was from South Australia. Of the Queensland cases, one was imported and the other cases occurred in a family. Eighty per cent (4/5) of cases were female and the overall male to female ratio was 0.3:1. The immunisation status of all cases was recorded as unknown. Two of the cases were aged 2 and 5 years. Additional information identified the imported case as immunised.

There were 16 notifications of rubella in this period, similar to the number of notifications reported for April 2000 (17). Most cases were reported from Queensland (5/16, 31%) and Victoria (6/16, 38%). Cases occurred in a range of age groups with the maximum number of cases in the 25-29 year age group. Three cases were aged less than 1 year and one case was aged 6 years. Amongst those aged 0 to 29 years, all except one case were male; in contrast all those aged 30 years and above were female. The overall male to female ratio was 2.2:1. Immunisation status was recorded as unknown for 88% (14/16) of cases and two were recorded as not immunised.

The number of mumps notifications remained stable over this period with 17 notifications compared with 14 notifications for April 2000. Most cases (11/17, 65%) were from New South Wales with two reports from the Australian Capital Territory and four reports from Victoria. Mumps cases occurred in those aged less than 24 years with most (11/17, 65%) occurring in the 15-24 year age range. Three cases were in children aged 6 years and under (4, 5 and 6 years). The overall male to female ratio was 1.1:1. Immunisation status was reported as unknown in 76% of cases (13/17) and as not immunised in 6% (1/17). Two cases (2/17, 12%) were reported as partially immunised and one case (1/17, 6%) as fully immunised. There was no information on the immunisation status of the cases aged 4 and 5 years.

Pertussis cases in this period had decreased (181) compared with April 2000 (193) and the mean of the last five years (325). Pertussis notifications remained most frequent in New South Wales (71/181, 39%), Victoria (51/181, 28%) and Queensland (28/181, 15%). Cases of pertussis occurred in all age groups but peaked in those aged 10-14 years. Ten cases were in children aged 6 years and

under, with six children aged less than 1 year, two children aged 4 years and one child each aged 5 and 6 years. There was a slight female predominance, with an overall male to female ratio of 0.9:1. Immunisation status was reported as unknown or not immunised in 93% of cases. The nine cases reported as partially immunised were aged 4 to 14 years. Of the ten cases aged 6 years and under, one 4 year old was reported as partially immunised and the remainder were reported as unknown immunisation status.

Bloodborne diseases

There were 1,546 notifications of hepatitis C in May 2000. This was a decrease from May last year (1,770), but an increase from April 2000 (1,520) and the mean of the last five years (1,334). Overall, 9,157 notifications of hepatitis C have been received for the year to date 2000. This was an increase from the year to date mean of the last five years (6,617). Of the notifications for May 2000, 14 were reported as hepatitis C incident cases. Thirty-six per cent of incident case notifications were in the 25-29 year age group. The male to female ratio was 1:1.2.

Gastrointestinal diseases

There were 584 notifications of salmonellosis in May 2000. This was an increase from April 2000 (525), from May last year (497) and from the mean of the last five years (521). Thirty-eight per cent of cases (220) were in the 0-4 year age group (Figure 2). The overall male to female ratio of cases was 1:1.2.

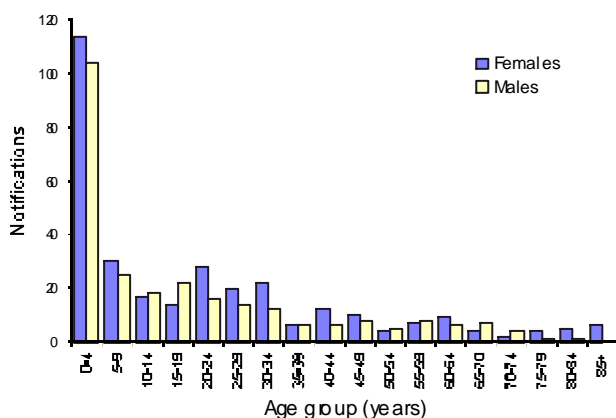
There were five notifications of typhoid in May 2000 (one case in New South Wales was confirmed by telecommunication as paratyphoid) and the ages ranged from 15 to 42 years. All four confirmed typhoid cases had a history of having been overseas prior to onset (two in Indonesia, one in the Philippines and Indonesia, and one in India).

Four States currently report SLTEC/VTEC. There was one case reported in May 2000 from South Australia.

Quarantinable diseases

There were no cases of cholera, plague, rabies, yellow fever or viral haemorrhagic fever in May 2000.

Figure 2. Notifications of salmonellosis, Australia, May 2000, by age group and sex



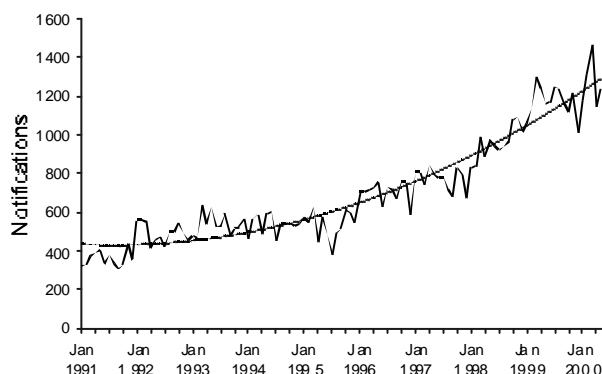
Sexually transmissible diseases

There were 1,241 notifications of chlamydial infection in May 2000, which was an increase from April 2000 (1,142), from May last year (1,163) and from the mean of the last five years (828). Overall, 6,337 notifications of chlamydial infection have been received for the year to date 2000, which was a 52% increase from the year to date mean of the last five years (4,158). Most cases of chlamydial infection were reported from Queensland (35%) and Victoria (23%). Eighty-five per cent of the cases were aged 15 to 34 years. The overall male to female ratio was 1:1.6. The trend of the January 1991 to May 2000 monthly notifications demonstrates that the number of reports of chlamydial infections is increasing steadily (Figure 3). The increase was partially due to inclusion of New South Wales reporting of chlamydia infection (commenced in September 1998. *Commun Dis Intell* 1999;23:290) and the introduction of nucleic acid detection tests for chlamydia since 1995; the latter have improved the sensitivity of laboratory tests and made specimen collection easier, and this may have impacted on the notification rates (Halliday L, Petersen M. *Communicable Diseases in the ACT 1993-1997. Health Series Number 20. Canberra: Australian Capital Territory Department of Health and Community Care, 1998*).

There were 477 notifications of gonococcal infection in May 2000, a decrease from April 2000 (480) and May last year (510), but an increase from the mean of the last five years (415). Most cases were reported from the Northern Territory (29%), then Queensland (21%), Victoria (18%) and Western Australian (17%). The ages of cases ranged from 0 to 59 years, with 84% of gonococcal notifications aged 15 to 39 years. The male to female ratio was 1.9:1.

Overall 139 syphilis notifications were received in May 2000, a decrease from both May last year (183) and the mean of the last five years (142), but an increase from April 2000 (121). The year to date 2000 figure (701) was close to the year to date mean of the last five years (729). Most of the notifications were reported from Queensland (58%), followed by New South Wales (22%) and the Northern Territory (15%). Syphilis cases were aged 14 to 85 years with peaks in the 20 to 24 (34%), 30 to 39 (19%) and 50 to 59 (17%) year age ranges. The male to female ratio was 1:1.1.

Figure 3. Notifications of Chlamydia infection, Australia, January 1991 to May 2000, by month



Vectorborne diseases

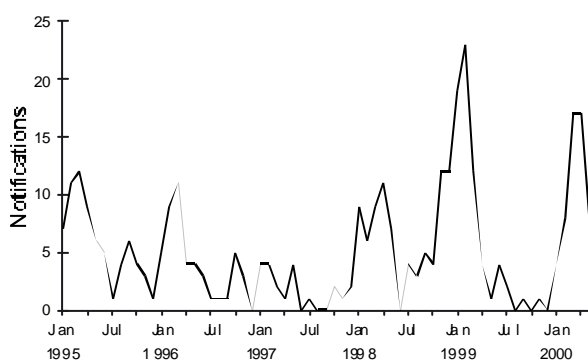
There were only three notifications for dengue in May 2000, which was a decrease from both April 2000 (18) and the mean of the last five years (11), but similar to May last year (4). There were two imported cases reported from the balance of the Northern Territory, i.e. outside Darwin, and one from Far North Queensland. A total of 175 notifications of dengue was received for the year to date 2000. This was an increase from the year to date mean of the last five years (96).

There were 476 notifications of Ross River virus infection in May 2000, which was a decrease from April 2000 (568), from May last year (495) and from the mean of the last five years (524). Most notifications were still from Queensland (31%); however New South Wales reported 131 cases in this period compared with 85 cases in April 2000, while Western Australia reported 118 cases in this period compared with 90 cases in April 2000. The age of cases ranged from 3 to 99 years old with a mean of 41 years of age (Median 40 years; Mode 37 years). The overall male to female ratio was 1.2:1.

There were 71 notifications of Barmah Forest virus infection in May 2000, an increase from April 2000 (50), but a decrease from both May last year (81) and the mean of the last five years (74). New South Wales reported 29 cases in this period compared with nine cases in April 2000, and the Mid North Coast of New South Wales was the most common residential region of notifications (18). More cases occurred in the 40 to 49 year age range (22; 31%) with a male to female ratio of 1.6:1.

There were eight notifications of arbovirus infection (NEC) in May 2000, fewer than for April 2000 (17) (Figure 4) but more than for both May last year (1) and the mean of the last five years (4). Six cases were reported from Western Australia (Kimberley, two cases; Central, two cases; Pilbara, one case and Perth, one case) and Victoria (Wimmera, two cases). The cases were aged from 22 to 69 years, with five male and three female notifications. Two of the cases of arbovirus infection (NEC) were notified as Murray Valley Encephalitis with onset dates in the month of May and were reported in *CDI*2000;24:127.

Figure 4. Notifications of arbovirus virus infections, Australia, January 1995 to May 2000, by month



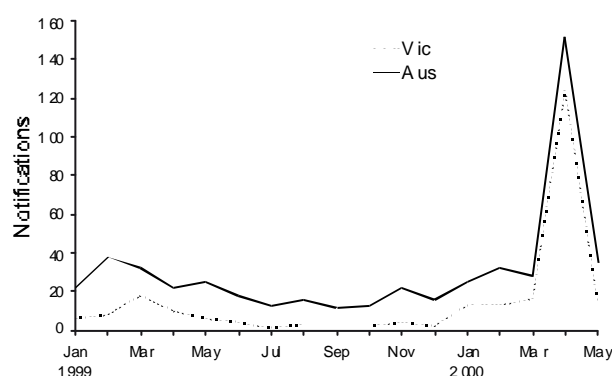
There were 110 notifications of malaria in May 2000, which almost doubled the number from April 2000 (67), from May last year (51) and from the mean of the last 5 years (58). The notifications for the year to date 2000 totalled 449, an increase from the year to date mean of the last five years (367). Most malaria cases were reported from Queensland (53), New South Wales (22) and Victoria (20), and it can be assumed that all were imported. The cases were due to *P. vivax* (78), *P. falciparum* (12), *P. ovale* (2), and *P. falciparum/P. vivax* (1). Fifty-six per cent of notifications were aged 20 to 34 years. The male to female ratio was 4.2:1.

Other diseases

There were 35 notifications of legionellosis in May 2000, a decline from the peak in April 2000 (152), but still above the level for May last year (25) and the mean of the last five years (18) (Figure 5). Victoria is still the top reporting State (40%), followed by Queensland (17%), South Australia (17%), and New South Wales (14%). There was one male case under 1 year of age; the remaining notifications were mostly evenly distributed between the 20 to 85 year age groups, with a male to female ratio of 2.2:1. Of these notifications, 18 (51%) were due to *L. pneumophila*, 13 (37%) *L. longbeachae*, and the rest unknown/other.

Thirty four reports of meningococcal infection were received with an onset date in May 2000, less than the number of notifications from April 2000 (38) and the same as the mean of the last five years (34). Most meningococcal cases were from New South Wales (13/34, 38%), Victoria (7/34, 21%) and Western Australia (9/34, 26%). Meningococcal notifications were most frequent in those aged under 30 years, predominantly in those aged 0-4 and 15-24 years. The overall male to female ratio was 0.8:1. Serogroup information was provided for 32% (11/34) of cases; of these 72% (8/11) were serogroup B, and there was one case each of serogroup C, serogroup W and serogroup Y.

Figure 5. Notifications of legionellosis, Victoria and Australia, January 1999 to May 2000, by month



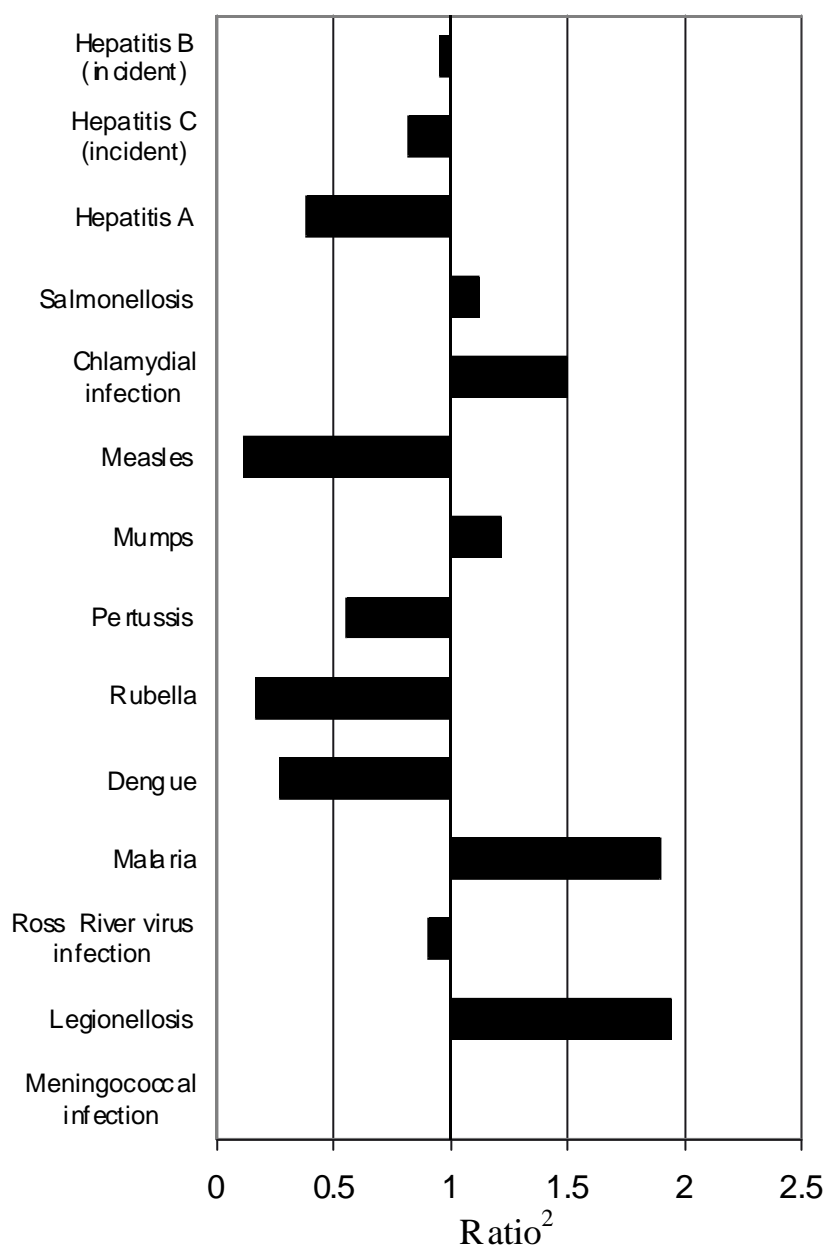
Tables

There were 6,899 notifications to the National Notifiable Diseases Surveillance System (NNDSS) with a notification date in May 2000 (Table 1). Data by date of report for weeks 18 to 21, ending 28 May 2000, are included in this issue of *CDI* (Table 2). The number of reports for selected diseases¹ have been compared with a 5 year mean, calculated using April to June data for the previous five years (Figure 6).

There were 2,083 reports received by the *CDI* Virology and Serology Laboratory Reporting Scheme (LabVISE) in the reporting period, 1 to 31 May 2000 (Tables 3 and 4).

The Australian Sentinel Practice Research Network (ASPREN) data for weeks 18 to 21, ending 28 May 2000, are included in this issue of *CDI* (Table 5).

Figure 6. Selected¹ diseases from the National Notifiable Diseases Surveillance System, comparison of provisional totals for the period 1 to 31 May 2000 with historical data²



1. Selected diseases are chosen each calendar month according to current activity
2. Ratio of current month total to mean of the April to June data for the previous five years

Table 1. Notifications of diseases received by State and Territory health authorities in the period 1 to 31 May 2000, by date of notification[#]

Disease	ACT	NSW	NT	Qld	SA	Tas	Vic	WA	Total May 2000 ¹	Total April 2000 ¹	Total May 1999 ¹	Last 5 years mean	Year to date 2000	Last 5 years YTD mean	Ratio [*]
Bloodborne															
Hepatitis B (incident)	0	3	0	6	3	0	4	6	22	20	35	23	122	124	1.0
Hepatitis B (unspecified) ²	4	178	0	79	0	5	217	81	564	589	630	566	3,301	2,912	1.0
Hepatitis C (incident)	0	3	0	0	4	3	1	3	14	24	29	17	139	82	0.8
Hepatitis C (unspecified) ²	17	457	6	311	52	27	527	135	1,532	1,496	1,741	1,317	3,018	6,535	1.2
Hepatitis D	0	0	0	0	0	0	0	0	0	3	2	2	7	6	0.0
Gastrointestinal															
Botulism	0	0	0	0	0	0	0	0	0	0	0	0	0	0	0.0
Campylobacteriosis ³	33	-	14	358	106	27	447	140	1,123	937	994	869	5,263	4,720	1.3
Haemolytic uraemic syndrome	NN	0	0	0	0	0	NN	0	0	1	2	2	6	4	0.0
Hepatitis A	0	11	3	13	4	1	23	12	67	82	117	173	459	1,094	0.4
Hepatitis E	0	0	0	0	0	0	0	0	0	0	0	2	0	2	0.0
Listeriosis	0	0	0	3	0	0	0	1	4	6	5	4	96	90	1.0
Salmonellosis	8	121	24	210	42	10	93	76	584	525	497	527	3,191	3,679	1.1
Shigellosis ³	2	-	11	10	7	0	8	14	52	49	40	56	230	327	0.9
SLTEC ₁ /VTEC ⁴	NN	0	0	NN	1	0	0	0	1	3	1	2	17	6	0.5
Typhoid	0	2	0	1	1	0	0	1	5	7	9	5	34	40	1.0
Yersiniosis ³	0	-	0	5	0	0	2	0	7	4	8	16	40	110	0.4
Quarantinable															
Cholera	0	0	0	0	0	0	0	0	0	0	0	0	1	2	0.0
Plague	0	0	0	0	0	0	0	0	0	0	0	0	0	0	ne
Rabies	0	0	0	0	0	0	0	0	0	0	0	0	0	0	ne
Viral haemorrhagic fever	0	0	0	0	0	0	0	0	0	0	0	0	0	0	ne
Yellow Fever	0	0	0	0	0	0	0	0	0	0	0	0	0	0	ne
Sexually transmissible															
Chancroid	0	0	0	0	0	0	0	0	0	0	0	0	0	1	0.0
Chlamydial infection ⁵	18	139	108	432	60	36	289	160	1,241	1,142	1,163	828	3,337	4,158	1.5
Donovanosis	0	0	1	0	NN	0	0	0	1	1	1	3	8	21	0.3
Gonococcal infection ⁶	5	55	138	100	11	3	85	80	477	480	510	415	2,521	2,039	1.1
Lymphogranuloma venereum	0	0	0	0	0	0	0	0	0	0	0	0	0	0	ne
Syphilis ⁷	1	31	21	80	0	0	0	6	139	121	183	142	701	729	1.0

Table 1 (continued). Notifications of diseases received by State and Territory health authorities in the period 1 to 31 May 2000, by date of notification[#]

Disease	ACT	NSW	NT	Qld	SA	Tas	Vic	WA	Total May 2000 ¹	Total April 2000 ¹	Total May 1999 ¹	Last 5 years mean	Year to date 2000	Last 5 years YTD mean	Ratio [*]
Vaccine preventable															
Diphtheria	0	0	0	0	0	0	0	0	0	0	0	0	0	0	na
<i>Haemophilus influenzae</i> type b	0	0	0	0	0	0	0	0	0	0	4	5	3	21	0.0
Measles	0	0	0	2	1	0	0	0	5	17	17	42	53	262	0.1
Mumps	2	11	0	0	0	0	4	0	17	14	18	14	76	68	1.2
Pertussis	3	71	0	28	14	11	51	3	181	193	258	325	1,289	2,028	0.6
Polio myelitis	0	0	0	0	0	0	0	0	0	0	0	0	0	0	na
Rubella [§]	0	3	0	5	1	1	6	0	13	17	33	55	79	600	0.2
Tetanus	0	0	0	0	0	0	0	0	0	0	0	0	3	3	0.0
Vectorborne															
Arbovirus infection NEC	0	0	0	0	0	0	2	6	8	17	1	4	54	39	2.0
Barmah Forest virus infection	0	29	2	36	0	0	1	3	71	50	81	74	302	446	1.0
Dengue	0	0	2	1	0	0	0	0	3	18	4	1	175	96	0.3
Malaria	0	22	6	53	5	1	20	3	119	67	51	58	449	367	1.9
Ross River virus infection	1	131	10	147	25	3	41	118	473	568	495	524	3,063	4,038	0.9
Zoonoses															
Brucellosis	0	0	0	1	0	0	0	0	1	0	4	2	6	13	0.5
Hydatid infection	0	NN	0	0	1	0	1	2	4	1	4	3	18	13	1.3
Leptospirosis	0	12	0	18	0	0	3	0	33	19	50	18	120	97	1.8
Ornithosis	0	NN	0	NN	0	0	4	0	4	8	8	7	34	34	0.6
Q Fever	0	6	0	23	0	1	2	0	32	42	40	46	214	210	0.7
Other															
Legionellosis	1	5	0	6	6	2	14	1	35	152	25	18	272	98	1.9
Leprosy	0	0	0	0	0	0	0	0	0	0	0	0	0	3	0.0
Meningococcal infection	0	13	2	1	1	1	7	3	34	38	41	34	165	125	1.0
Tuberculosis	0	8	0	1	0	1	18	5	33	42	79	77	317	418	0.4
Total	95	1,311	348	1,933	345	132	1,870	865	6,893	6,753	7,180	6,327	33,123	35,616	

1. Totals comprise data from all States and Territories. Cumulative figures are subject to retrospective revision so there may be discrepancies between the number of new notifications and the increment in the cumulative figure from the previous period.
 2. Unspecified numbers should be interpreted with some caution as the magnitude may be a reflection of the numbers of tests being carried out.
 3. Not reported for NSW because it is only notifiable as 'foodborne disease' or 'gastroenteritis in an institution'.
 4. Infections with Shiga-like toxin (Verotoxin) producing *E. coli* (SLTEC/VTEC).
 5. V/A: genital only.
 6. NT, Qld, SA, Vic and WA includes gonococcal neonatal ophthalmia.
 7. Includes congenital syphilis.
 8. Includes congenital rubella.
 # Date of notification = a composite of three components: (i) the true onset date from a clinician, if available, (ii) the date the laboratory test was ordered, or (iii) the date reported to the public health unit.
 NN Not Notifiable.
 NEC Not Elsewhere Classified.
 na Not applicable.
 * Ratio = ratio of current month total to mean of last 5 years calculated as described above.

Table 2. Notifications of diseases received by State and Territory health authorities for weeks 18 to 21, by date of report,* May 2000

Week number Week ending on Disease ¹	18 7 May 2000	19 14 May 2000	20 21 May 2000	21 28 May 2000	Year to date total
Bloodborne					
Hepatitis B (incident)	1	5	8	6	105
Hepatitis B (unspecified) ²	109	212	159	140	2,826
Hepatitis C (incident)	1	5	6	3	134
Hepatitis C (unspecified) ²	350	439	444	365	7,688
Hepatitis D	1	0	0	0	6
Gastrointestinal					
Botulism	0	0	0	0	0
Campylobacterosis ³	240	229	311	257	4,167
Haemolytic uraemic syndrome	1	0	0	0	5
Hepatitis A	25	17	26	16	395
Hepatitis E	0	0	0	0	0
Listeriosis	2	1	1	2	31
Salmonellosis	142	162	189	150	2,620
Shigellosis ³	13	22	12	18	164
SLTEC,VTEC ⁴	1	2	0	0	17
Typhoid	1	1	2	1	32
Yersiniosis ³	3	0	1	1	33
Quarantinable					
Cholera	0	0	0	0	1
Plague	0	0	0	0	0
Rabies	0	0	0	0	0
Viral haemorrhagic fever	0	0	0	0	0
Yellow Fever	0	0	0	0	0
Sexually transmissible					
Chancroid	0	0	0	0	0
Chlamydial infection ⁵	289	291	359	293	5,118
Donovanosis	0	0	0	0	8
Gonococcal infection ⁶	98	152	105	177	2,001
Lymphogranuloma venereum	0	0	0	0	0
Syphilis ⁷	57	29	32	50	588
Vaccine preventable					
Diphtheria	0	0	0	0	0
<i>Haemophilus influenzae</i> type b	0	0	0	0	5
Measles	4	0	0	6	46
Mumps	2	5	5	7	59
Pertussis	70	61	73	60	1,232
Poliomyelitis	0	0	0	0	0
Rubella ⁸	2	6	7	1	64
Tetanus	0	0	0	0	4
Vectorborne					
Arbovirus infection NEC	2	10	5	3	35
Barmah Forest virus infection	8	24	32	11	232
Dengue	8	8	1	3	174
Malaria	33	30	22	22	328
Ross River virus infection	185	179	178	113	2,512

Table 2 (continued). Notifications of diseases received by State and Territory health authorities for weeks 18 to 21, by date of report*, May 2000

Week number Week ending on Disease ¹	18 7 May 2000	19 14 May 2000	20 21 May 2000	21 28 May 2000	Year to date total
Zoonoses					
Brucellosis	0	0	1	0	6
Hydatid infection	0	1	3	1	13
Leptospirosis	2	3	9	17	86
Ornithosis	0	2	10	0	31
Q Fever	11	3	16	7	193
Other					
Legionellosis	57	30	19	6	158
Leprosy	0	0	0	0	0
Meningococcal infection	6	6	11	7	137
Tuberculosis	14	18	17	15	330
Total	1,738	1,953	2,064	1,758	31,584

1. Totals comprise data from all States and Territories. Cumulative figures are subject to retrospective revision so there may be discrepancies between the number of new notifications and the increment in the cumulative figure from the previous period.

2. Unspecified numbers should be interpreted with some caution as the magnitude may be a reflection of the numbers of tests being carried out.

3. Not reported for NSW because it is only notifiable as 'foodborne disease' or 'gastroenteritis in an institution'.

4. Infections with Shiga-like toxin (verotoxin) producing *E coli* (SLTEC/VTEC).

5. WA: genital only.

6. NT, Qld, SA, Vic and WA: includes gonococcal neonatal ophthalmia.

7. Includes congenital syphilis.

8. Includes congenital rubella.

* Date of report is the date the public health unit received the report.

NN Not Notifiable.

NEC Not Elsewhere Classified.

- Elsewhere Classified.

Table 3. Virology and serology laboratory reports by contributing laboratories for the reporting period 1 to 31 May 2000¹

State or Territory	Laboratory	This period	Total this period ²
Australian Capital Territory	The Canberra Hospital	23	39
New South Wales	Institute of Clinical Pathology & Medical Research, Westmead	137	143
	New Children's Hospital, Westmead	100	112
New South Wales	Repatriation General Hospital, Concord	0	0
	Royal Prince Alfred Hospital, Camperdown	36	84
	South West Area Pathology Service, Liverpool	0	0
Queensland	Queensland Medical Laboratory, West End	407	421
	Townsville General Hospital	10	17
South Australia	Institute of Medical and Veterinary Science, Adelaide	451	329
Tasmania	Northern Tasmanian Pathology Service, Launceston	4	0
	Royal Hobart Hospital, Hobart	0	0
Victoria	Monash Medical Centre, Melbourne	0	6
	Royal Children's Hospital, Melbourne	122	105
	Victorian Infectious Diseases Reference Laboratory, Fairfield	140	229
Western Australia	PathCentre Virology, Perth	587	1,463
	Princess Margaret Hospital, Perth	49	62
	Western Diagnostic Pathology	17	28
Total		2,083	3,038

1. The complete list of laboratories reporting for the 12 months, January to December 2000, will appear in every report from January 2000 regardless of whether reports were received in this reporting period. Reports are not always received from all laboratories.

2. Total reports include both reports for the current period and outstanding reports to date.

Table 4. Virology and serology laboratory reports by State or Territory¹ for the reporting period 1 to 31 May 2000, and total reports for the year²

	State or Territory ¹								This period 2000	This period 1999	Year to date 2000 ³	Year to date 1999
	ACT	NSW	NT	Qld	SA	Tas	Vic	WA				
Measles, mumps, rubella												
Measles virus	0	0	0	0	2	0	1	0	3	10	21	127
Mumps virus	0	0	0	0	0	0	1	2	3	6	29	27
Rubella virus	0	0	0	2	0	0	0	1	3	10	19	39
Hepatitis viruses												
Hepatitis A virus	0	0	0	4	5	0	0	8	17	27	85	173
Arboviruses												
Ross River virus	0	10	5	34	37	1	5	104	196	180	988	973
Barmah Forest virus	0	1	2	7	0	0	0	2	12	33	95	108
Dengue not typed	0	0	2	0	0	1	0	3	6	7	161	31
Murray Valley encephalitis virus	0	0	1	0	0	0	0	11	12	1	19	2
Kunjin virus	0	0	0	0	0	0	0	3	3	2	4	4
Flavivirus (unspecified)	0	0	0	1	0	0	0	0	1	0	35	16
Adenoviruses												
Adenovirus type 3	0	0	0	0	0	0	2	0	2	4	12	16
Adenovirus type 40	0	0	0	0	0	0	0	15	15	2	59	22
Adenovirus not typed/pending	0	7	2	0	32	0	4	40	85	86	449	441
Herpes viruses												
Herpes virus type 6	0	0	0	0	0	0	0	2	2	1	4	4
Cytomegalovirus	5	17	0	21	43	1	25	15	127	97	529	508
Varicella-zoster virus	1	8	0	28	11	0	30	42	120	147	643	706
Epstein-Barr virus	0	7	1	70	106	0	8	25	217	273	928	1,071
Other DNA viruses												
Papovavirus group	0	0	0	0	0	0	0	1	1	4	5	7
Molluscum contagiosum	0	0	0	0	0	0	0	2	2	0	8	6
Contagious pustular dermatitis (Orf virus)	0	0	0	0	0	0	0	3	3	0	6	6
Parvovirus	0	0	0	0	5	1	4	18	28	38	140	169
Picornavirus family												
Coxsackievirus A9	0	1	0	0	0	0	0	0	1	0	4	5
Echovirus type 7	0	2	0	0	1	0	0	0	3	0	16	1
Echovirus type 22	0	1	0	0	0	0	0	0	1	0	2	11
Echovirus type 30	0	1	0	0	0	0	3	0	4	0	95	6
Echovirus type 33	0	1	0	0	0	0	0	0	1	0	2	0
Rhinovirus (all types)	0	22	0	0	0	0	2	17	41	37	166	144
Enterovirus not typed/pending	1	5	0	2	1	0	41	16	66	39	515	297
Ortho/paramyxoviruses												
Influenza A virus	0	5	1	0	20	0	2	9	37	147	264	307
Influenza B virus	0	1	0	0	3	0	0	8	12	12	50	55
Parainfluenza virus type 1	0	0	0	3	13	0	4	18	38	5	148	18
Parainfluenza virus type 2	0	1	0	0	2	0	1	2	6	19	16	55
Parainfluenza virus type 3	0	0	0	0	5	0	0	6	11	19	97	170
Respiratory syncytial virus	7	121	0	17	16	0	53	88	302	222	702	550
Other RNA viruses												
Rotavirus	5	26	0	0	26	0	3	3	63	124	208	338
Norwalk agent	0	0	0	0	0	0	2	0	2	12	4	29

Table 4 (continued). Virology and serology laboratory reports by State or Territory¹ for the reporting period 1 to 31 May 2000, and total reports for the year²

	State or Territory ¹								This period 2000	This period 1999	Year to date 2000 ³	Year to date 1999
	ACT	NSW	NT	Qld	SA	Tas	Vic	WA				
Other												
<i>Chlamydia trachomatis</i> not typed	5	50	59	83	45	4	13	106	365	263	1,496	1,259
<i>Chlamydia psittaci</i>	0	0	0	0	0	0	8	1	9	7	40	35
<i>Chlamydia</i> species	0	2	0	0	0	0	0	0	2	2	5	9
<i>Mycoplasma pneumoniae</i>	0	3	2	15	9	0	8	8	45	85	231	453
<i>Coxiella burnetii</i> (Q fever)	0	0	0	0	1	0	0	3	4	24	31	78
<i>Streptococcus</i> group A	0	3	3	18	0	0	0	0	24	26	160	28
<i>Bordetella pertussis</i>	1	1	0	7	3	0	34	1	47	79	225	276
<i>Legionella pneumophila</i>	0	0	0	0	7	0	0	3	10	2	13	14
<i>Legionella longbeachae</i>	2	1	0	0	2	0	0	2	7	3	29	17
<i>Cryptococcus</i> species	0	1	0	0	2	0	0	0	3	0	5	6
<i>Leptospira</i> species	0	3	0	3	1	0	0	0	7	9	21	9
<i>Treponema pallidum</i>	0	3	20	30	50	0	0	1	104	45	275	53
<i>Toxoplasma gondii</i>	0	0	0	0	1	0	1	0	2	1	6	5
<i>Echinococcus granulosus</i>	0	0	0	0	4	0	0	4	8	0	13	0
Total	27	304	98	345	453	8	255	593	2,083	2,110	9,078	8,684

1. State or Territory of postcode, if reported, otherwise State or Territory of reporting laboratory.

2. From January 2000 data presented are for reports with report dates in the current period. Previously reports included all data received in that period.

3. Totals comprise data from all laboratories. Cumulative figures are subject to retrospective revision, so there may be discrepancies between the number of new notifications and the increment in the cumulative figure from the previous period.

- No data received this period.

Table 5. Australian Sentinel Practice Research Network reports, weeks 18 to 21, 2000

Week number	18		19		20		21	
	7 May 2000		14 May 2000		21 May 2000		28 May 2000	
Doctors reporting	66		71		68		69	
Total encounters	8,339		9,048		7,946		8,596	
Condition	Rate per 1,000		Rate per 1,000		Rate per 1,000		Rate per 1,000	
	Reports	encounters	Reports	encounters	Reports	encounters	Reports	encounters
Influenza	40	4.8	39	4.3	49	6.2	62	7.2
Chickenpox	9	1.1	13	1.4	13	1.6	12	1.4
Gastroenteritis	61	7.3	60	6.6	66	8.3	59	6.9
Gastroenteritis with stool culture	12	1.4	17	1.9	13	1.6	17	2.0
ADT immunisations	52	6.2	53	5.9	46	5.8	47	5.5

The NNDSS is conducted under the auspices of the Communicable Diseases Network Australia New Zealand. The system coordinates the national surveillance of more than 40 communicable diseases or disease groups endorsed by the National Health and Medical Research Council (NHMRC). Notifications of these diseases are made to State and Territory health authorities under the provisions of their respective public health legislations. De-identified core unit data are supplied fortnightly for collation, analysis and dissemination. For further information, see CDI 2000;24:6-7.

LabVISE is a sentinel reporting scheme. Currently 17 laboratories contribute data on the laboratory identification of viruses and other organisms. This number may change throughout the year. Data are collated and published in Communicable Diseases Intelligence every four weeks. These data should be interpreted with caution as the number and type of reports received is subject to a number of biases. For further information, see CDI 2000;24:10.

ASPREN currently comprises about 120 general practitioners from throughout the country. Between 7,000 and 8,000 consultations are reported each week, with special attention to 14 conditions chosen for sentinel surveillance in 2000. CDI reports the consultation rates for five of these. For further information, including case definitions, see CDI 2000;24:7-8.

Additional Reports

HIV and AIDS Surveillance

National surveillance for HIV disease is coordinated by the National Centre in HIV Epidemiology and Clinical Research (NCHECR), in collaboration with State and Territory health authorities and the Commonwealth of Australia. Cases of HIV infection are notified to the National HIV Database on the first occasion of diagnosis in Australia, by either the diagnosing laboratory (Australian Capital Territory, New South Wales, Tasmania, Victoria) or by a combination of laboratory and doctor sources (Northern Territory, Queensland, South Australia, Western Australia). Cases of AIDS are notified through the State and Territory health authorities to the National AIDS Registry. Diagnoses of both HIV infection and AIDS are notified with the person's date of birth and name code, to minimise duplicate notifications while maintaining confidentiality.

Tabulations of diagnoses of HIV infection and AIDS are based on data available three months after the end of the reporting interval indicated, to allow for reporting delay and to incorporate newly available information. More detailed information on diagnoses of HIV infection and AIDS is published in the quarterly Australian HIV Surveillance Report, and annually in HIV/AIDS and related diseases in Australia Annual Surveillance Report. The reports are available from the National Centre in HIV Epidemiology and Clinical Research, 376 Victoria Street, Darlinghurst NSW 2010. Telephone: (02) 9332 4648; Facsimile: (02) 9332 1837; <http://www.med.unsw.edu.au/nchechr>.

HIV and AIDS diagnoses and deaths following AIDS reported for 1 to 31 January 2000, as reported to 30 April 2000, are included in this issue of CDI (Tables 6 and 7).

Table 6. New diagnoses of HIV infection, new diagnoses of AIDS and deaths following AIDS occurring in the period 1 to 31 January 2000, by sex and State or Territory of diagnosis

		ACT	NSW	NT	Qld	SA	Tas	Vic	WA	Totals for Australia			
										This period 2000	This period 1999	Year to date 2000	Year to date 1999
HIV diagnoses	Female	0	3	0	2	0	0	2	2	9	3	9	3
	Male	3	34	1	11	1	0	15	4	69	47	69	47
	Sex not reported	0	1	0	0	0	0	0	0	1	0	1	0
	Total ¹	3	38	1	13	1	0	18	6	80	50	80	50
AIDS diagnoses	Female	1	2	0	0	0	0	1	0	4	0	4	0
	Male	0	9	0	3	0	0	6	1	19	10	19	10
	Total ¹	1	11	0	3	0	0	7	1	23	10	23	10
AIDS deaths	Female	1	0	0	1	0	0	1	0	3	0	3	0
	Male	0	1	0	0	0	0	1	1	3	21	3	21
	Total ¹	1	1	0	1	0	0	2	1	6	22	6	22

1. Persons whose sex was reported as transgender are included in the totals.

Table 7. Cumulative diagnoses of HIV infection, AIDS and deaths following AIDS since the introduction of HIV antibody testing to 31 January 2000, by sex and State or Territory

		State or Territory								Australia
		ACT	NSW	NT	Qld	SA	Tas	Vic	WA	
HIV diagnoses	Female	26	603	11	150	61	5	212	115	1,183
	Male	224	10,837	109	1,976	673	79	3,887	912	18,697
	Sex not reported	0	254	0	0	0	0	24	0	278
	Total ¹	250	11,713	120	2,133	734	84	4,137	1,031	20,202
AIDS diagnoses	Female	9	186	0	47	25	3	69	26	365
	Male	86	4,641	36	821	345	44	1,612	349	7,934
	Total ¹	95	4,839	36	870	370	47	1,688	377	8,322
AIDS deaths	Female	4	113	0	32	15	2	49	16	231
	Male	65	3,168	24	564	230	29	1,268	248	5,596
	Total ¹	69	3,289	24	598	245	31	1,323	265	5,844

1. Persons whose sex was reported as transgender are included in the totals.