

Communicable diseases surveillance

Tables

National Notifiable Diseases Surveillance System

A summary of diseases currently being reported by each jurisdiction is provided in Table 1. There were 60,971 notifications to the National Notifiable Diseases Surveillance System (NNDSS) with a notification received date between 1 January and 31 March 2011 (Table 2). The notification rate of diseases per 100,000 population for each state or territory is presented in Table 3.

Table 1: Reporting of notifiable diseases by jurisdiction

Disease	Data received from:
Bloodborne diseases	
Hepatitis (NEC)	All jurisdictions
Hepatitis B (newly acquired)	All jurisdictions
Hepatitis B (unspecified)	All jurisdictions
Hepatitis C (newly acquired)	All jurisdictions except Queensland
Hepatitis C (unspecified)	All jurisdictions
Hepatitis D	All jurisdictions
Gastrointestinal diseases	
Botulism	All jurisdictions
Campylobacteriosis	All jurisdictions except New South Wales
Cryptosporidiosis	All jurisdictions
Haemolytic uraemic syndrome	All jurisdictions
Hepatitis A	All jurisdictions
Hepatitis E	All jurisdictions
Listeriosis	All jurisdictions
STEC, VTEC*	All jurisdictions
Salmonellosis	All jurisdictions
Shigellosis	All jurisdictions
Typhoid	All jurisdictions
Quarantinable diseases	
Cholera	All jurisdictions
Highly pathogenic avian influenza in humans	All jurisdictions
Plague	All jurisdictions
Rabies	All jurisdictions
Severe acute respiratory syndrome	All jurisdictions
Smallpox	All jurisdictions
Viral haemorrhagic fever	All jurisdictions
Yellow fever	All jurisdictions
Sexually transmissible infections	
Chlamydial infection	All jurisdictions
Donovanosis	All jurisdictions
Gonococcal infection	All jurisdictions
Syphilis <2 years duration	All jurisdictions
Syphilis >2 years or unspecified duration	All jurisdictions except South Australia
Syphilis - congenital	All jurisdictions

Table 1: Reporting of notifiable diseases by jurisdiction, *continued*

Disease	Data received from:
Vaccine preventable diseases	
Diphtheria	All jurisdictions
<i>Haemophilus influenzae</i> type b	All jurisdictions
Influenza (laboratory confirmed)	All jurisdictions
Measles	All jurisdictions
Mumps	All jurisdictions
Pertussis	All jurisdictions
Pneumococcal disease (invasive)	All jurisdictions
Poliomyelitis	All jurisdictions
Rubella	All jurisdictions
Rubella - congenital	All jurisdictions
Tetanus	All jurisdictions
Varicella zoster (chickenpox)	All jurisdictions except New South Wales
Varicella zoster (shingles)	All jurisdictions except New South Wales
Varicella zoster (unspecified)	All jurisdictions except New South Wales
Vectorborne diseases	
Arbovirus infection (NEC)	All jurisdictions
Barmah Forest virus infection	All jurisdictions
Dengue virus infection	All jurisdictions
Japanese encephalitis virus infection	All jurisdictions
Kunjin virus infection	All jurisdictions
Malaria	All jurisdictions
Murray Valley encephalitis virus infection	All jurisdictions
Ross River virus infection	All jurisdictions
Zoonoses	
Anthrax	All jurisdictions
Australian bat lyssavirus	All jurisdictions
Brucellosis	All jurisdictions
Leptospirosis	All jurisdictions
Lyssavirus (NEC)	All jurisdictions
Ornithosis	All jurisdictions
Q fever	All jurisdictions
Tularaemia	All jurisdictions
Other bacterial infections	
Legionellosis	All jurisdictions
Leprosy	All jurisdictions
Meningococcal infection	All jurisdictions
Tuberculosis	All jurisdictions

* Infections with Shiga-like toxin (verotoxin) producing *Escherichia coli* (STEC/VTEC).

NEC Not elsewhere classified.

Table 2: Notifications of diseases received by state and territory health authorities, 1 January to 31 March 2011, by date of diagnosis

Disease	State or territory							Total 1st quarter 2011	Total 4th quarter 2010	Total 1st quarter 2010	Last 5 years mean 1st quarter	Ratio	Year to date 2011	Last 5 years YTD mean
	ACT	NSW	NT	Qld	SA	Tas	Vic							
Bloodborne diseases														
Hepatitis (NEC)	0	0	0	0	0	0	0	0	0	0	0.2	0.0	0	0.2
Hepatitis B (newly acquired)*	1	9	2	12	3	2	15	3	36	73	65.2	0.7	47	65.2
Hepatitis B (unspecified)†	20	714	50	247	79	7	444	157	1,648	1,962	1,718.8	1.0	1,718	1,718.8
Hepatitis C (newly acquired)*,‡	1	15	1	NN	7	7	47	29	80	100	99.0	1.1	107	99.0
Hepatitis C (unspecified)†	43	876	47	600	106	60	597	252	2,716	3,029	3,005.2	0.9	2,581	3,005.2
Hepatitis D	0	3	0	3	0	0	4	0	8	4	9.2	1.1	10	9.2
Gastrointestinal diseases														
Botulism	0	0	0	0	0	0	0	0	0	0	0.4	0.0	0	0.4
Campylobacteriosis§	149	NN	45	1,382	500	216	1,953	641	5,247	4,234	4,312.8	1.1	4,886	4,312.8
Cryptosporidiosis	9	104	30	115	57	3	46	262	297	525	1,356.0	0.5	626	1,356.0
Haemolytic uraemic syndrome	0	2	1	1	0	0	0	0	1	3	5.2	0.8	4	5.2
Hepatitis A	1	23	0	3	1	1	13	2	49	101	81.4	0.5	44	81.4
Hepatitis E	1	8	0	3	0	0	4	0	6	12	11.0	1.5	16	11.0
Listeriosis	0	6	1	3	2	1	4	2	16	34	26.4	0.7	19	26.4
STEC, VTEC	0	0	0	4	7	0	6	0	16	33	33.8	0.5	17	33.8
Salmonellosis	65	1,560	116	1,132	403	74	981	443	2,873	4,097	3,386.4	1.4	4,774	3,386.4
Shigellosis	4	47	24	20	7	0	25	37	128	165	190.4	0.9	164	190.4
Typhoid	1	25	0	8	4	1	11	6	17	31	32.4	1.7	56	32.4
Quarantinable diseases														
Cholera	0	0	0	1	0	0	0	0	0	0	0.6	1.7	1	0.6
Highly pathogenic avian influenza in humans	0	0	0	0	0	0	0	0	0	0	0.0	0.0	0	0.0
Plague	0	0	0	0	0	0	0	0	0	0	0.0	0.0	0	0.0
Rabies	0	0	0	0	0	0	0	0	0	0	0.0	0.0	0	0.0
Severe acute respiratory syndrome	0	0	0	0	0	0	0	0	0	0	0.0	0.0	0	0.0
Smallpox	0	0	0	0	0	0	0	0	0	0	0.0	0.0	0	0.0
Viral haemorrhagic fever	0	0	0	0	0	0	0	0	0	0	0.0	0.0	0	0.0
Yellow fever	0	0	0	0	0	0	0	0	0	0	0.0	0.0	0	0.0

Table 2 continued: Notifications of diseases received by state and territory health authorities, 1 January to 31 March 2011, by date of diagnosis

Disease	State or territory							Total 1st quarter 2011	Total 4th quarter 2010	Total 1st quarter 2010	Last 5 years mean 1st quarter	Ratio	Year to date 2011	Last 5 years YTD mean
	ACT	NSW	NT	Qld	SA	Tas	Vic							
Sexually transmissible infections														
Chlamydia infection ^{†**}	346	5,267	679	4,872	1,289	435	4,775	2,943	17,635	19,073	14,977.4	1.4	20,606	14,977.4
Donovanosis	0	0	0	0	0	0	0	0	0	0	0.6	0.0	0	0.6
Gonococcal infection ^{**}	45	615	521	722	135	3	457	435	2,521	2,376	2,184.8	1.3	2,933	2,184.8
Syphilis <2 years duration ^{**}	2	92	16	88	4	0	78	34	250	314	303.2	1.0	314	303.2
Syphilis >2 years or unspecified duration ^{**}	9	64	13	48	NDP	5	150	26	256	330	332.6	0.9	315	332.6
Syphilis – congenital ^{**}	0	2	0	2	0	0	0	0	0	1	1.4	2.9	4	1.4
Vaccine preventable diseases														
Diphtheria	0	0	0	0	0	0	0	0	0	0	0.0	0.0	0	0.0
<i>Haemophilus influenzae</i> type b	0	2	0	1	0	0	0	0	8	3	4.0	0.8	3	4.0
Influenza (laboratory confirmed)	17	350	306	1,232	175	9	341	176	3,843	468	381.6	6.8	2,606	381.6
Measles	2	46	0	10	0	0	20	3	10	14	29.2	2.8	81	29.2
Mumps	0	13	0	9	3	0	11	2	29	19	61.2	0.6	38	61.2
Pertussis	347	3,598	53	2,388	951	63	2,773	425	14,155	5,679	3,742.4	2.8	10,598	3,742.4
Pneumococcal disease (invasive)	4	63	23	29	23	7	37	33	390	211	203.2	1.1	219	203.2
Poliovirus	0	0	0	0	0	0	0	0	0	0	0.0	0.0	0	0.0
Rubella	1	7	0	5	1	0	6	2	4	16	8.8	2.5	22	8.8
Rubella – congenital	0	0	0	0	0	0	0	0	0	0	0.0	0.0	0	0.0
Tetanus	0	1	0	0	0	0	0	0	0	1	1.6	0.6	1	1.6
Varicella zoster (chickenpox) ^{††}	3	NN	14	43	105	9	118	78	551	279	294.0	1.3	370	294.0
Varicella zoster (shingles) ^{††}	5	NN	45	25	390	40	272	208	812	781	536.6	1.8	985	536.6
Varicella zoster (unspecified) ^{††}	18	NN	0	994	29	19	492	239	1,872	1,772	1,281.0	1.4	1,791	1,281.0
Vectorborne diseases														
Arbovirus infection (NEC)	0	0	0	0	0	0	4	0	15	4	6.8	0.6	4	6.8
Barmah Forest virus infection	2	233	16	326	74	2	129	53	406	454	604.2	1.4	835	604.2
Dengue virus infection	3	35	13	110	12	0	37	148	449	161	295.6	1.2	358	295.6
Japanese encephalitis virus infection	0	0	0	0	0	0	0	0	0	0	0.0	0.0	0	0.0
Kunjin virus infection ^{††}	0	0	0	0	0	0	0	0	0	1	0.8	0.0	0	0.8
Malaria	0	19	8	41	0	2	28	20	99	94	142.8	0.8	118	142.8
Murray Valley encephalitis virus infection ^{††}	0	1	2	0	2	0	0	3	0	0	0.6	13.3	8	0.6
Ross River virus infection	5	277	80	453	805	4	1,042	372	1,031	1,653	2,123.4	1.4	3,038	2,123.4

Table 2 continued: Notifications of diseases received by state and territory health authorities, 1 January to 31 March 2011, by date of diagnosis

Disease	State or territory							Total 1st quarter 2011	Total 4th quarter 2010	Total 1st quarter 2010	Last 5 years mean 1st quarter	Ratio	Year to date 2011	Last 5 years YTD mean
	ACT	NSW	NT	Qld	SA	Tas	Vic							
Zoonoses														
Anthrax	0	0	0	0	0	0	0	0	0	1	0.6	0.0	0	0.6
Australian bat lyssavirus	0	0	0	0	0	0	0	0	0	0	0.0	0.0	0	0.0
Brucellosis	0	2	0	8	0	0	1	0	5	5	9.8	1.1	11	9.8
Leptospirosis	0	12	1	99	0	0	2	1	36	20	46.0	2.5	115	46.0
Lyssavirus (NEC)	0	0	0	0	0	0	0	0	0	0	0.0	0.0	0	0.0
Ornithosis	0	3	0	0	0	0	18	1	28	11	23.8	0.9	22	23.8
Q fever	0	17	0	46	1	0	3	2	75	77	99.2	0.7	69	99.2
Tularaemia	0	0	0	0	0	1	0	0	0	0	0.0	0.0	1	0.0
Other bacterial infections														
Legionellosis	0	23	3	15	10	2	18	8	81	61	72.8	1.1	79	72.8
Leprosy	0	0	0	0	0	0	0	0	2	3	2.6	0.0	0	2.6
Meningococcal infection ^{§§}	1	22	3	13	5	2	8	4	53	46	51.0	1.1	58	51.0
Tuberculosis	6	87	6	72	13	3	84	28	375	293	286.0	1.0	299	286.0
Total	1,111	14,449	2,119	15,430	5,276	1,000	15,058	7,131	58,129	48,624			60,971	48,624

* Newly acquired hepatitis includes cases where the infection was determined to be acquired within 24 months prior to diagnosis.

† Unspecified hepatitis and syphilis includes cases where the duration of infection could not be determined.

‡ In Queensland, includes incident hepatitis cases.

§ Not reported for New South Wales where it is only notifiable as 'foodborne disease' or 'gastroenteritis in an institution'.

|| Infections with Shiga-like toxin (verotoxin) producing *Escherichia coli* (STEC/VTEC).

¶ Includes *Chlamydia trachomatis* identified from cervical, rectal, urine, urethral, throat and eye samples, except for South Australia, which reports only genital tract specimens. The Northern Territory and Western Australia, exclude ocular infections.

** In the national case definitions for chlamydial, gonococcal and syphilis infections the mode of transmission cannot be inferred from the site of infection. Transmission (especially in children) may be by a non-sexual mode (e.g. perinatal infections, epidemic gonococcal conjunctivitis).

†† Ratio of current quarter total to the mean of last 5 years for the same quarter. Ratios for varicella zoster (chickenpox), varicella zoster (shingles) and varicella zoster (unspecified) are based on 4 years of data.

‡‡ In the Australian Capital Territory, Murray Valley encephalitis virus infection and Kunjin virus infection are combined under Murray Valley encephalitis virus infection.

§§ Only invasive meningococcal disease is nationally notifiable. However, New South Wales, the Australian Capital Territory and South Australia also report conjunctival cases.

NN Not notifiable.

NEC Not elsewhere classified.

NDP No data provided.

Table 3: Notification rates of diseases, 1 January to 31 March 2011, by state or territory. (Annualised rate per 100,000 population)

Disease	State or territory								
	ACT	NSW	NT	Qld	SA	Tas	Vic	WA	Aust
Bloodborne diseases									
Hepatitis (NEC)	0.0	0.0	0.0	0.0	0.0	0.0	0.0	0.0	0.0
Hepatitis B (newly acquired)*	1.1	0.5	3.6	1.1	0.7	1.6	1.1	0.5	0.9
Hepatitis B (unspecified)†	22.8	40.4	89.3	22.4	19.7	5.7	32.8	28.0	31.5
Hepatitis C (newly acquired)*	1.1	0.8	1.8	NN	1.7	5.7	3.5	5.2	2.5
Hepatitis C (unspecified)†‡	49.1	49.6	83.9	54.5	26.4	48.5	44.1	45.0	47.4
Hepatitis D	0.0	0.2	0.0	0.3	0.0	0.0	0.3	0.0	0.2
Gastrointestinal diseases									
Botulism	0.0	0.0	0.0	0.0	0.0	0.0	0.0	0.0	0.0
Campylobacteriosis§	170.2	NN	80.3	125.5	124.6	174.5	144.3	114.4	132.6
Cryptosporidiosis	10.3	5.9	53.6	10.4	14.2	2.4	3.4	46.8	11.5
Haemolytic uraemic syndrome	0.0	0.1	1.8	0.1	0.0	0.0	0.0	0.0	0.1
Hepatitis A	1.1	1.3	0.0	0.3	0.2	0.8	1.0	0.4	0.8
Hepatitis E	1.1	0.5	0.0	0.3	0.0	0.0	0.3	0.0	0.3
Listeriosis	0.0	0.3	1.8	0.3	0.5	0.8	0.3	0.4	0.3
STEC, VTEC¶	0.0	0.0	0.0	0.4	1.7	0.0	0.4	0.0	0.3
Salmonellosis	74.3	88.4	207.1	102.8	100.5	59.8	72.5	79.1	87.6
Shigellosis	4.6	2.7	42.8	1.8	1.7	0.0	1.8	6.6	3.0
Typhoid fever	1.1	1.4	0.0	0.7	1.0	0.8	0.8	1.1	1.0
Quarantinable diseases									
Cholera	0.0	0.0	0.0	0.1	0.0	0.0	0.0	0.0	0.0
Human pathogenic avian influenza in humans	0.0	0.0	0.0	0.0	0.0	0.0	0.0	0.0	0.0
Plague	0.0	0.0	0.0	0.0	0.0	0.0	0.0	0.0	0.0
Rabies	0.0	0.0	0.0	0.0	0.0	0.0	0.0	0.0	0.0
Severe acute respiratory syndrome	0.0	0.0	0.0	0.0	0.0	0.0	0.0	0.0	0.0
Smallpox	0.0	0.0	0.0	0.0	0.0	0.0	0.0	0.0	0.0
Viral haemorrhagic fever	0.0	0.0	0.0	0.0	0.0	0.0	0.0	0.0	0.0
Yellow fever	0.0	0.0	0.0	0.0	0.0	0.0	0.0	0.0	0.0
Sexually transmitted infections									
Chlamydial infection¶,***	395.3	298.3	1,212.1	442.3	321.3	351.3	352.9	525.4	378.1
Donovanosis	0.0	0.0	0.0	0.0	0.0	0.0	0.0	0.0	0.0
Gonococcal infection**	51.4	34.8	930.1	65.5	33.7	2.4	33.8	77.7	53.8
Syphilis <2 years duration**	2.3	5.2	28.6	8.0	1.0	0.0	5.8	6.1	5.8
Syphilis >2 years or unspecified duration†,**	10.3	3.6	23.2	4.4	NDP	4.0	11.1	4.6	6.2
Syphilis – congenital**	0.0	0.1	0.0	0.2	0.0	0.0	0.0	0.0	0.1
Vaccine preventable diseases									
Diphtheria	0.0	0.0	0.0	0.0	0.0	0.0	0.0	0.0	0.0
<i>Haemophilus influenzae</i> type b	0.0	0.1	0.0	0.1	0.0	0.0	0.0	0.0	0.1
Influenza (laboratory confirmed)	19.4	19.8	546.3	111.8	43.6	7.3	25.2	31.4	47.8
Measles	2.3	2.6	0.0	0.9	0.0	0.0	1.5	0.5	1.5
Mumps	0.0	0.7	0.0	0.8	0.7	0.0	0.8	0.4	0.7
Pertussis	396.4	203.8	94.6	216.8	237.1	50.9	204.9	75.9	194.5
Pneumococcal disease (invasive)	4.6	3.6	41.1	2.6	5.7	5.7	2.7	5.9	4.0
Poliomyelitis	0.0	0.0	0.0	0.0	0.0	0.0	0.0	0.0	0.0
Rubella	1.1	0.4	0.0	0.5	0.2	0.0	0.4	0.4	0.4
Rubella – congenital	0.0	0.0	0.0	0.0	0.0	0.0	0.0	0.0	0.0
Tetanus	0.0	0.1	0.0	0.0	0.0	0.0	0.0	0.0	0.0

Table 3 continued: Notification rates of diseases, 1 January to 31 March 2011, by state or territory. (Annualised rate per 100,000 population)

Disease	State or territory								
	ACT	NSW	NT	Qld	SA	Tas	Vic	WA	Aust
Vaccine preventable diseases, continued									
Varicella zoster (chickenpox)	3.4	NN	25.0	3.9	26.2	7.3	8.7	13.9	10.0
Varicella zoster (shingles)	5.7	NN	80.3	2.3	97.2	32.3	20.1	37.1	26.7
Varicella zoster (unspecified)	20.6	NN	0.0	90.2	7.2	15.3	36.4	42.7	48.6
Vectorborne diseases									
Arbovirus infection (NEC)	0.0	0.0	0.0	0.0	0.0	0.0	0.3	0.0	0.1
Barmah Forest virus infection	2.3	13.2	28.6	29.6	18.4	1.6	9.5	9.5	15.3
Dengue virus infection	3.4	2.0	23.2	10.0	3.0	0.0	2.7	26.4	6.6
Japanese encephalitis virus infection	0.0	0.0	0.0	0.0	0.0	0.0	0.0	0.0	0.0
Kunjin virus infection ^{††}	0.0	0.0	0.0	0.0	0.0	0.0	0.0	0.0	0.0
Malaria	0.0	1.1	14.3	3.7	0.0	1.6	2.1	3.6	2.2
Murray Valley encephalitis virus infection ^{††}	0.0	0.1	3.6	0.0	0.5	0.0	0.0	0.5	0.1
Ross River virus infection	5.7	15.7	142.8	41.1	200.7	3.2	77.0	66.4	55.7
Zoonoses									
Anthrax	0.0	0.0	0.0	0.0	0.0	0.0	0.0	0.0	0.0
Australia bat lyssavirus	0.0	0.0	0.0	0.0	0.0	0.0	0.0	0.0	0.0
Brucellosis	0.0	0.1	0.0	0.7	0.0	0.0	0.1	0.0	0.2
Leptospirosis	0.0	0.7	1.8	9.0	0.0	0.0	0.1	0.2	2.1
Lyssavirus (NEC)	0.0	0.0	0.0	0.0	0.0	0.0	0.0	0.0	0.0
Ornithosis	0.0	0.2	0.0	0.0	0.0	0.0	1.3	0.2	0.4
Q fever	0.0	1.0	0.0	4.2	0.2	0.0	0.2	0.4	1.3
Tularaemia	0.0	0.0	0.0	0.0	0.0	0.8	0.0	0.0	0.0
Other bacterial diseases									
Legionellosis	0.0	1.3	5.4	1.4	2.5	1.6	1.3	1.4	1.4
Leprosy	0.0	0.0	0.0	0.0	0.0	0.0	0.0	0.0	0.0
Meningococcal infection ^{‡‡}	1.1	1.2	5.4	1.2	1.2	1.6	0.6	0.7	1.1
Tuberculosis	6.9	4.9	10.7	6.5	3.2	2.4	6.2	5.0	5.5

* Newly acquired hepatitis includes cases where the infection was determined to be acquired within 24 months prior to diagnosis.

† Unspecified hepatitis and syphilis includes cases where the duration of infection could not be determined.

‡ In Queensland, includes incident hepatitis C cases.

§ Not reported for New South Wales where it is only notifiable as 'foodborne disease' or 'gastroenteritis in an institution'.

|| Infection with Shiga toxin/verotoxin-producing *Escherichia coli* (STEC/VTEC).

¶ Includes *Chlamydia trachomatis* identified from cervical, rectal, urine, urethral, throat and eye samples, except for South Australia, which reports only genital tract specimens; the Northern Territory and Western Australia exclude ocular infections.

** In the national case definitions for chlamydial, gonococcal and syphilis infections the mode of transmission cannot be inferred from the site of infection. Transmission (especially in children) may be by a non-sexual mode (e.g. perinatal infections, epidemic gonococcal conjunctivitis).

†† In the Australian Capital Territory, Murray Valley encephalitis virus infection and Kunjin virus infection are combined under Murray Valley encephalitis virus infection.

‡‡ Only invasive meningococcal disease is nationally notifiable. However, New South Wales, the Australian Capital Territory and South Australia also report conjunctival cases.

NEC Not elsewhere classified.

NN Not notifiable.

NDP No data provided.

Laboratory Serology and Virology Reporting Scheme

There were 11,057 reports received by the Laboratory Virology and Serology Reporting Scheme (LabVISE) in the reporting period, 1 January and 31 March 2011 (Tables 4 and 5).

Table 4: Laboratory Virology and Serology reports, 1 January to 31 March 2011 and total reports for the year,* by state or territory†

	State or territory								This period 2011	This period 2010	Year to date 2011	Year to date 2010
	ACT	NSW	NT	Qld	SA	Tas	Vic	WA				
Measles, mumps, rubella												
Measles virus	–	11	–	–	–	–	5	1	17	8	17	8
Mumps virus	–	–	–	2	1	–	1	1	5	6	5	6
Rubella virus	–	–	–	–	–	–	–	4	4	9	4	9
Hepatitis viruses												
Hepatitis A virus	–	1	–	3	1	1	–	2	8	16	8	16
Hepatitis D virus	–	1	–	–	1	–	–	–	2	4	2	4
Hepatitis E virus	–	–	–	1	–	–	–	–	1	1	1	1
Arboviruses												
Ross River virus	–	3	12	113	404	–	4	42	578	354	578	354
Barmah Forest virus	–	10	–	67	44	–	–	6	127	69	127	69
Alphavirus (unspecified)	–	–	1	–	–	–	–	1	2	–	2	–
Dengue type 1	–	–	5	–	–	–	–	37	42	–	42	–
Dengue type 2	–	–	–	–	–	–	–	16	16	–	16	–
Dengue type 3	–	–	2	–	–	–	–	28	30	–	30	–
Dengue type 4	–	–	1	–	–	–	–	10	11	–	11	–
Dengue not typed	–	–	10	–	–	–	–	111	121	–	121	–
Flavivirus (unspecified)	–	6	–	28	–	–	5	–	39	59	39	59
Adenoviruses												
Adenovirus type 40	–	–	–	–	–	–	–	2	2	–	2	–
Adenovirus type 41	–	–	–	–	–	–	–	17	17	–	17	–
Adenovirus not typed/ pending	2	94	10	109	258	1	2	62	538	226	538	226
Herpesviruses												
Herpes virus type 6	–	2	–	–	–	–	–	1	3	1	3	1
Cytomegalovirus	–	73	–	108	98	3	6	–	288	394	288	394
Varicella-zoster virus	2	62	–	483	161	1	21	96	826	815	826	815
Epstein-Barr virus	–	16	32	302	152	1	6	119	628	866	628	866
Other DNA viruses												
Molluscum contagiosum	–	–	–	–	–	–	–	14	14	–	14	–
Parvovirus	–	1	–	28	16	1	16	6	68	73	68	73
Picornavirus family												
Rhinovirus (all types)	2	114	–	–	409	–	–	21	546	61	546	61
Enterovirus type 71 (BCR)	–	1	–	–	–	–	–	–	1	–	1	–
Enterovirus not typed/ pending	–	35	–	–	1	1	–	6	43	25	43	25
Picornavirus not typed	–	–	7	–	–	1	–	39	47	2	47	2
Ortho/paramyxoviruses												
Influenza A virus	6	40	8	132	99	–	11	38	334	149	334	149
Influenza A virus H3N2	–	–	56	1	–	–	–	28	85	–	85	–
Influenza B virus	–	8	4	21	28	–	3	12	76	25	76	25
Parainfluenza virus type 1	–	5	–	1	1	–	–	1	8	70	8	70
Parainfluenza virus type 2	–	3	–	2	7	–	–	–	12	18	12	18
Parainfluenza virus type 3	–	30	2	16	61	–	–	46	155	34	155	34

Table 4 continued: Laboratory Virology and Serology reports, 1 January to 31 March 2011, and total reports for the year,* by state or territory†

	State or territory								This period 2011	This period 2010	Year to date 2011	Year to date 2010
	ACT	NSW	NT	Qld	SA	Tas	Vic	WA				
Ortho/paramyxoviruses, continued												
Respiratory syncytial virus	–	103	4	113	31	–	–	33	284	265	284	265
Paramyxovirus (unspecified)	–	10	–	–	–	–	–	–	10	–	10	–
Other RNA viruses												
HTLV-1	–	–	–	1	10	–	–	–	11	17	11	17
Rotavirus	–	14	–	–	7	–	–	11	32	18	32	18
Calicivirus	–	–	–	–	–	–	–	105	105	–	105	–
Norwalk agent	2	30	–	–	111	–	–	–	143	305	143	305
Other												
<i>Chlamydia trachomatis</i> not typed	5	357	4	1,644	532	17	4	451	3,014	3,145	3,014	3,145
<i>Chlamydia pneumoniae</i>	–	–	–	–	–	–	2	–	2	29	2	29
<i>Chlamydia psittaci</i>	–	–	–	1	–	–	13	–	14	8	14	8
<i>Chlamydia</i> spp typing pending	–	15	–	–	–	–	–	–	15	6	15	6
<i>Chlamydia</i> species	–	–	–	–	–	–	1	–	1	1	1	1
<i>Mycoplasma pneumoniae</i>	–	13	7	80	138	2	44	64	348	276	348	276
<i>Mycoplasma hominis</i>	–	4	–	–	–	–	–	–	4	–	4	–
<i>Coxiella burnetii</i> (Q fever)	1	7	–	9	5	–	6	1	29	51	29	51
<i>Rickettsia prowazeki</i>	–	–	–	–	1	–	–	–	1	1	1	1
<i>Orientia tsutsuganushi</i>	–	1	–	1	–	–	–	–	2	–	2	–
<i>Rickettsia</i> - spotted fever group	–	8	–	15	4	2	4	–	33	16	33	16
<i>Rickettsia</i> spp - other	–	1	–	–	–	1	3	1	6	–	6	–
<i>Streptococcus</i> group A	–	11	–	131	–	–	25	–	167	176	167	176
<i>Brucella</i> species	–	–	–	20	–	–	–	–	20	3	20	3
<i>Bordetella pertussis</i>	4	96	–	676	663	1	111	100	1,651	1,573	1,651	1,573
<i>Legionella pneumophila</i>	1	2	1	5	1	1	2	4	17	4	17	4
<i>Legionella longbeachae</i>	–	–	–	–	1	–	–	4	5	5	5	5
<i>Legionella</i> species	1	4	–	9	–	–	1	3	18	10	18	10
<i>Cryptococcus</i> species	–	–	–	2	5	–	–	–	7	15	7	15
<i>Leptospira</i> species	–	–	1	30	3	–	–	1	35	15	35	15
<i>Treponema pallidum</i>	1	48	2	194	83	–	30	15	373	528	373	528
<i>Entamoeba histolytica</i>	–	–	–	–	1	–	–	–	1	3	1	3
<i>Toxoplasma gondii</i>	–	3	–	1	4	2	1	1	12	5	12	5
<i>Echinococcus granulosus</i>	–	–	–	–	3	–	–	–	3	1	3	1
Total	27	1,243	169	4,349	3,345	36	327	1,561	11,057	9,761	11,057	9,761

* Data presented are for reports with report dates in the current period.

† State or territory of postcode, if reported, otherwise state or territory of reporting laboratory.

– No data received this period.

Table 5: Laboratory Virology and Serology reports, 1 January to 31 March 2011,* by laboratory

State or territory	Laboratory	January 2011	February 2011	March 2011	Total
Australian Capital Territory	The Canberra Hospital	–	–	–	–
New South Wales	Institute of Clinical Pathology and Medical Research, Westmead	141	258	276	675
	New Children's Hospital, Westmead	48	53	76	177
	Repatriation General Hospital, Concord	–	–	–	–
	Royal Prince Alfred Hospital, Camperdown	–	–	–	–
	South West Area Pathology Service, Liverpool	37	24	62	123
Queensland	Queensland Medical Laboratory, West End	1,785	1,834	1,039	4,658
	Townsville General Hospital	–	–	–	–
South Australia	Institute of Medical and Veterinary Science, Adelaide	1,734	1,603	–	3,337
Tasmania	Northern Tasmanian Pathology Service, Launceston	14	10	4	28
	Royal Hobart Hospital, Hobart	–	–	–	–
Victoria	Australian Rickettsial Reference Laboratory	43	1	–	44
	Monash Medical Centre, Melbourne	–	–	–	–
	Royal Children's Hospital, Melbourne	107	38	3	148
	Victorian Infectious Diseases Reference Laboratory	68	–	64	132
Western Australia	PathWest Virology, Perth	742	793	27	1,562
	Princess Margaret Hospital, Perth	–	–	–	–
	Western Diagnostic Pathology	43	57	73	173
Total		4,762	4,671	1,624	11,057

* The complete list of laboratories reporting for the 12 months, January to December 2011, will appear in every report regardless of whether reports were received in this reporting period. Reports are not always received from all laboratories.

– No data received this period.

Additional reports

Australian Sentinel Practices Research Network

The Australian Sentinel Practices Research Network (ASPREN) is a national surveillance system that is funded by the Commonwealth's Department of Health and Ageing, owned and operated by the Royal Australian College of General Practitioners and directed through the Discipline of General Practice at the University of Adelaide.

The network consists of general practitioners who report presentations on a number of defined medical conditions each week. ASPREN was established in 1991 to provide a rapid monitoring scheme for infectious diseases that can alert public health officials of epidemics in their early stages as well as play a role in the evaluation of public health campaigns and research of conditions commonly seen in general practice. Electronic, web-based data collection was established in 2006.

In June 2010, ASPREN's laboratory ILI testing was implemented, allowing for viral testing of 25% of ILI patients for a range of respiratory viruses including influenza A, influenza B and H1N1(2009).

The list of conditions is reviewed annually by the ASPREN management committee. In 2011, 4 conditions are being monitored. They include influenza-like illness (ILI), gastroenteritis and varicella infections (chickenpox and shingles). Definitions of these conditions are described in *Surveillance systems reported in CDI, published in Commun Dis Intell 2011;35(1):57-58.*

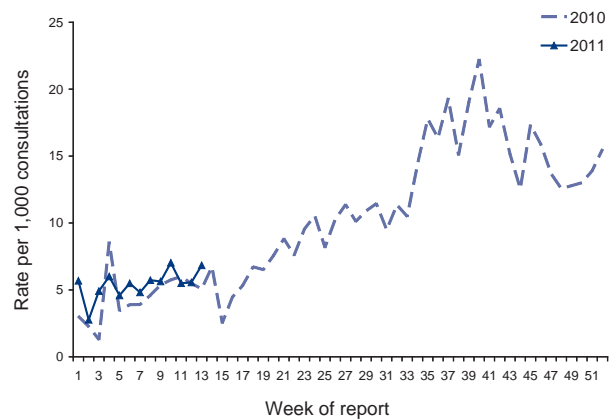
Reporting period 1 January to 31 March 2011

Sentinel practices contributing to ASPREN were located in all 8 jurisdictions in Australia. A total of 102 general practitioners contributed data to ASPREN in the 1st quarter of 2011. Each week an average of 94 general practitioners provided information to ASPREN at an average of 8,125 (range 3,872-9,362) consultations per week and an average of 105 (range 60-133) notifications per week.

ILI rates reported from 1 January to 31 March 2011 averaged 5 cases per 1,000 consultations (range 3-7 cases per 1,000 consultations). The reported rates in January, February and March 2011 (3-6 cases per 1,000 consultations, 5-6 cases per 1,000 consultations and 6-7 cases per 1,000 consultations respectively) were relatively consistent compared with rates in the same reporting

period in 2010 (1-9 cases per 1,000 consultations, 4-5 cases per 1,000 consultations and 5-6 cases per 1,000 consultations, respectively).

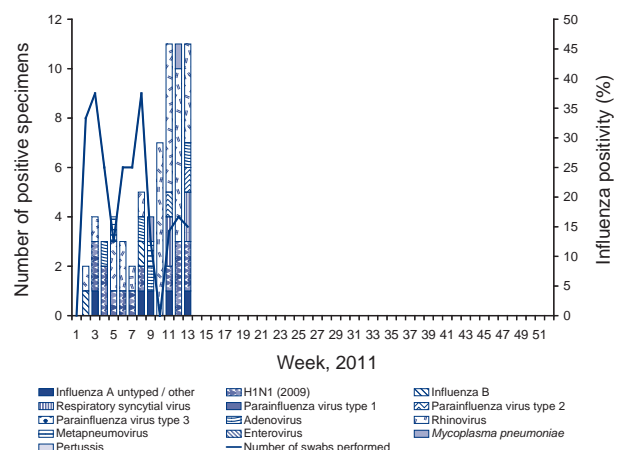
Figure 1: Consultation rates for influenza-like illness, ASPREN, 1 January 2010 to 31 March 2011, by week of report



ILI swab testing has continued through 2011. The most commonly reported virus during this reporting period was rhinovirus (27% of all swabs performed), with the second most common virus being influenza A H1N1(2009) (12% of all swabs performed).

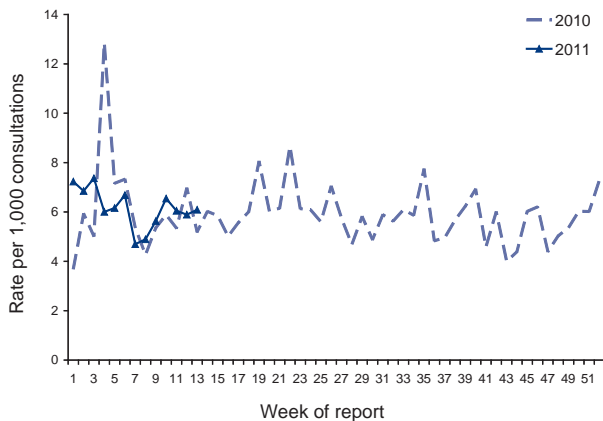
From the beginning of 2011 to the end of week 13, 21 cases of influenza have been detected, the majority of these being H1N1(2009) (12% of all swabs performed) and the remainder were influenza A untyped or other (4%) and influenza B (2%) (Figure 2).

Figure 2: Influenza-like illness swab testing results, ASPREN, 1 January 2010 to 31 March 2011, by week of report



During this reporting period, consultation rates for gastroenteritis averaged 6 cases per 1,000 consultations (range 5–7 cases per 1,000, Figure 3). This was relatively consistent compared with rates in the same reporting period in 2010 where the average was 6 cases per 1,000 consultations (range 4–13 cases per 1,000).

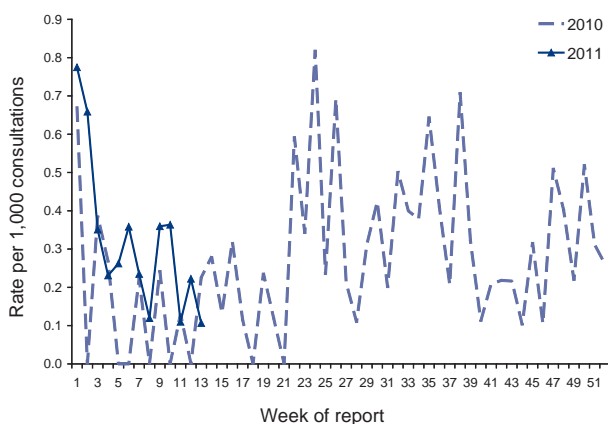
Figure 3: Consultation rates for gastroenteritis, ASPREN, 1 January 2010 to 31 March 2011, by week of report



Varicella infections were reported at a slightly higher rate for the 1st quarter of 2011 compared with the same period in 2010. From 1 January to 31 March 2011, recorded rates for chickenpox averaged 0.3 cases per 1,000 consultations (range 0.1 to 0.8 cases per 1,000 consultations, Figure 4).

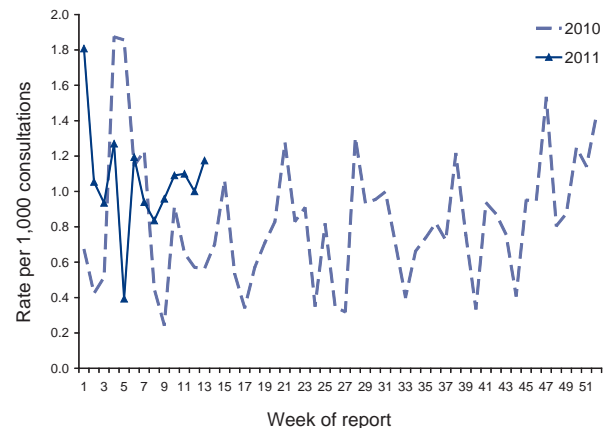
In the 1st quarter of 2011, reported rates for shingles averaged 1.1 cases per 1,000 consultations (range 0.4–1.8 cases per 1,000 consultations, Figure 5), slightly higher than the same reporting period in

Figure 4: Consultation rates for chickenpox, ASPREN, 1 January 2010 to 31 March 2011, by week of report



2010 where the average shingles rate was 0.9 cases per 1,000 consultations (0.2–1.9 cases per 1,000 consultations).

Figure 5: Consultation rates for shingles, ASPREN, 1 January 2010 to 31 March 2011, by week of report



Meningococcal surveillance

(Dr Monica M Lahra, The Prince of Wales Hospital, Randwick, NSW, 2031 for the Australian Gonococcal Surveillance Programme)

The reference laboratories of the Australian Meningococcal Surveillance Programme report data on the number of cases confirmed by laboratory testing using culture and by non-culture based techniques. Culture positive cases, where Neisseria meningitidis is grown from a normally sterile site or skin lesions, and non-culture based diagnoses, derived from results of nucleic acid amplification assays (NAA) and serological techniques, are defined as invasive meningococcal disease (IMD) according to Public Health Laboratory Network definitions. Data contained in quarterly reports are restricted to a description of the numbers of cases by jurisdiction and serogroup, where known. Some minor corrections to data in the Table may be made in subsequent reports if additional data are received. A full analysis of laboratory confirmed cases of IMD in each calendar year is contained in the annual reports of the Programme is published in Communicable Diseases Intelligence. For more information see Commun Dis Intell 2011;35(1):57.

Laboratory confirmed cases of invasive meningococcal disease for the period 1 January to 31 March 2011, are included in this issue of Communicable Diseases Intelligence (Table 1).

Table: Number of laboratory confirmed cases of invasive meningococcal disease, Australia, 1 January to 31 March 2011, by serogroup and state or territory

State or territory	Year	Serogroup													
		A		B		C		Y		W135		ND		All	
		Q1	YTD	Q1	YTD	Q1	YTD	Q1	YTD	Q1	YTD	Q1	YTD	Q1	YTD
Australian Capital Territory	11			3	3	0	0	0	0	0	0	0	0	3	3
	10			0	0	0	0	0	0	0	0	0	0	0	0
New South Wales	11			10	10	0	0	3	3	1	1	3	3	17	17
	10			13	13	0	0	0	0	1	1	1	1	15	15
Northern Territory	11			0	0	0	0	0	0	0	0	0	0	0	0
	10			0	0	0	0	0	0	0	0	0	0	0	0
Queensland	11			8	8	1	1	1	1	0	0	0	0	10	10
	10			6	6	0	0	0	0	0	0	0	0	6	6
South Australia	11			3	3	0	0	0	0	1	1	0	0	4	4
	10			4	4	0	0	1	1	0	0	0	0	5	5
Tasmania	11			0	0	1	1	0	0	1	1	0	0	2	2
	10			0	0	0	0	0	0	0	0	0	0	0	0
Victoria	11			10	10	0	0	0	0	0	0	0	0	10	10
	10			3	3	0	0	1	1	1	1	0	0	5	5
Western Australia	11			4	4	0	0	0	0	0	0	0	0	4	4
	10			2	2	1	1	0	0	0	0	0	0	3	3
Total	11			38	38	2	1	4	4	3	3	3	3	50	50
	10			28	28	1	1	2	2	2	2	1	1	34	34

HIV and AIDS surveillance

National surveillance for HIV disease is coordinated by the Kirby Institute (formerly the National Centre in HIV Epidemiology and Clinical Research), in collaboration with state and territory health authorities and the Commonwealth of Australia. Cases of HIV infection are notified to the National HIV Registry on the first occasion of diagnosis in Australia, by either the diagnosing laboratory (Australian Capital Territory, New South Wales, Tasmania, Victoria) or by a combination of laboratory and doctor sources (Northern Territory, Queensland, South Australia, Western Australia). Cases of AIDS are notified through the state and territory health authorities to the National AIDS Registry. Diagnoses of both HIV infection and AIDS are notified with the person's date of birth and name code, to minimise duplicate notifications while maintaining confidentiality.

Tabulations of diagnoses of HIV infection and AIDS are based on data available 3 months after the end of the reporting interval indicated, to allow for reporting delay and to incorporate newly available information. More detailed information on diagnoses of HIV infection and AIDS is published in the quarterly Australian HIV Surveillance Report, and annually in 'HIV/AIDS, viral hepatitis and sexually transmissible infections in Australia, annual surveillance report'. The reports are available from the Kirby Institute, CFI Building, Cnr Boundary and West Streets, Darlinghurst NSW 2010. Internet: <http://hiv.cms.med.unsw.edu.au/> Telephone: +61 2 9385 0900. Facsimile: +61 2 9385 0920. For more information see Commun Dis Intell 2011;35(1):58.

HIV and AIDS diagnoses and deaths following AIDS reported for 1 January to 31 March 2010, and 1 April to 30 June 2010, are included in this issue of Communicable Diseases Intelligence (Tables 1, 2, 3 and 4).

Table 1: New diagnoses of HIV infection, new diagnoses of AIDS and deaths following AIDS occurring in the period 1 January to 31 March 2010, by sex and state or territory of diagnosis

	Sex	State or territory								Totals for Australia			
		ACT	NSW	NT	Qld	SA	Tas	Vic	WA	This period 2010	This period 2009	YTD 2010	YTD 2009
HIV diagnoses	Female	0	8	0	19	2	0	7	0	36	41	36	41
	Male	0	87	4	48	12	0	55	5	211	211	211	211
	Not reported	0	1	0	0	0	0	2	0	3	0	3	0
	Total*	0	97	4	67	14	0	64	5	251	252	251	252
AIDS diagnoses [†]	Female	0	–	0	1	0	0	1	0	2	6	2	6
	Male	0	–	2	3	1	0	8	0	14	21	14	21
	Total*	0	–	2	4	1	0	9	0	16	27	16	27
AIDS deaths [†]	Female	0	–	0	0	0	0	0	0	0	0	0	0
	Male	0	–	0	1	1	0	3	0	5	3	5	3
	Total*	0	–	0	1	1	0	3	0	5	3	5	3

* Totals include people whose sex was reported as transgender.

† AIDS cases and deaths following AIDS occurring in New South Wales from January 2008 are not included.

Table 2: Number of new diagnoses of HIV infection since the introduction of HIV antibody testing 1985, and number of new diagnoses of AIDS and deaths following AIDS since 1981, cumulative to 31 March 2010, by sex and state or territory

	Sex	State or territory								Aust
		ACT	NSW	NT	Qld	SA	Tas	Vic	WA	
HIV diagnoses	Female	37	1,018	30	374	127	17	472	266	2,341
	Male	283	14,573	162	3,299	1,078	127	6,067	1,405	26,994
	Not reported	0	229	0	0	0	0	22	0	251
	Total*	320	15,853	192	3,682	1,206	144	6,585	1,678	29,660
AIDS diagnoses [†]	Female	10	265	6	78	32	4	127	48	570
	Male	95	5,513	50	1,101	427	55	2,162	458	9,861
	Total*	105	5,796	56	1,181	460	59	2,302	508	10,467
AIDS deaths [†]	Female	7	138	1	43	20	2	66	30	307
	Male	73	3,597	33	682	281	34	1,452	301	6,453
	Total*	80	3,746	34	727	301	36	1,527	332	6,783

* Totals include people whose sex was reported as transgender.

† AIDS cases and deaths following AIDS occurring in New South Wales from January 2008 are not included.

Table 3: New diagnoses of HIV infection, new diagnoses of AIDS and deaths following AIDS occurring in the period 1 April to 30 June 2010, by sex and state or territory of diagnosis

	Sex	State or territory								Totals for Australia			
		ACT	NSW	NT	Qld	SA	Tas	Vic	WA	This period 2010	This period 2009	YTD 2010	YTD 2009
HIV diagnoses	Female	1	5	0	7	2	0	9	8	32	35	71	76
	Male	4	73	0	52	10	0	68	21	228	238	453	450
	Not reported	0	0	0	0	0	0	0	0	0	1	1	1
	Total*	5	78	0	59	12	0	77	29	260	274	528	527
AIDS diagnoses [†]	Female	0	–	0	0	0	0	0	1	1	2	3	8
	Male	0	–	0	5	0	0	9	1	15	23	30	44
	Total*	0	–	0	5	0	0	9	2	16	25	33	52
AIDS deaths [†]	Female	0	–	0	1	0	0	0	0	1	1	1	1
	Male	0	–	0	1	0	0	2	0	3	2	8	5
	Total*	0	–	0	2	0	0	2	0	4	3	9	6

* Totals include people whose sex was reported as transgender.

† AIDS cases and deaths following AIDS occurring in New South Wales from January 2008 are not included.

Table 4: Number of new diagnoses of HIV infection since the introduction of HIV antibody testing 1985, and number of new diagnoses of AIDS and deaths following AIDS since 1981, cumulative to 30 June 2010, by sex and state or territory

	Sex	State or territory								Aust
		ACT	NSW	NT	Qld	SA	Tas	Vic	WA	
HIV diagnoses	Female	38	1,025	30	381	129	17	481	281	2,382
	Male	287	14,656	162	3,349	1,088	127	6,136	1,443	27,248
	Not reported	0	228	0	0	0	0	22	0	250
	Total*	325	15,942	192	3,739	1,218	144	6,663	1,731	29,954
AIDS diagnoses [†]	Female	10	265	6	78	32	4	127	49	571
	Male	95	5,513	50	1,106	427	55	2,171	461	9,878
	Total*	105	5,796	56	1,186	460	59	2,311	512	10,485
AIDS deaths [†]	Female	7	138	1	44	20	2	66	30	308
	Male	73	3,597	33	683	281	34	1,454	301	6,456
	Total*	80	3,746	34	729	301	36	1,529	332	6,787

* Totals include people whose sex was reported as transgender.

† AIDS cases and deaths following AIDS occurring in New South Wales from January 2008 are not included.